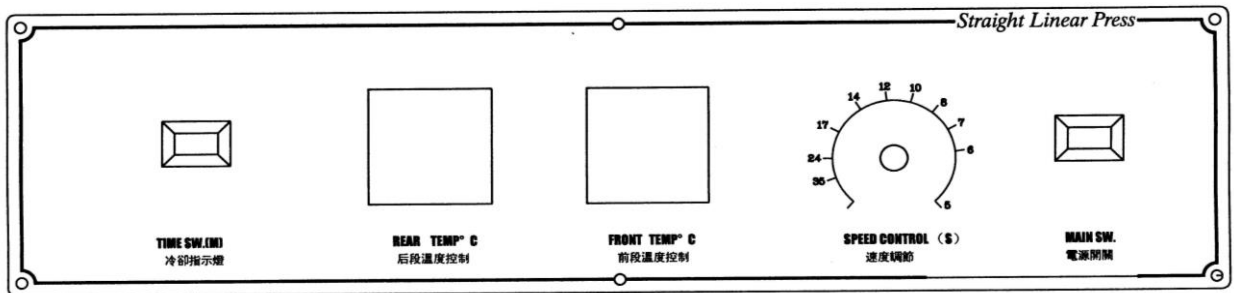


## 1. OPERATION PANEL :



- 1). Cooling Lamp
- 2). Speed controller: Control the speed to set up the heating time for fusing the different kinds of fabric.
- 3). Thermostat: Control the fusing temperature
- 4). Thermostat
- 5). Power switch

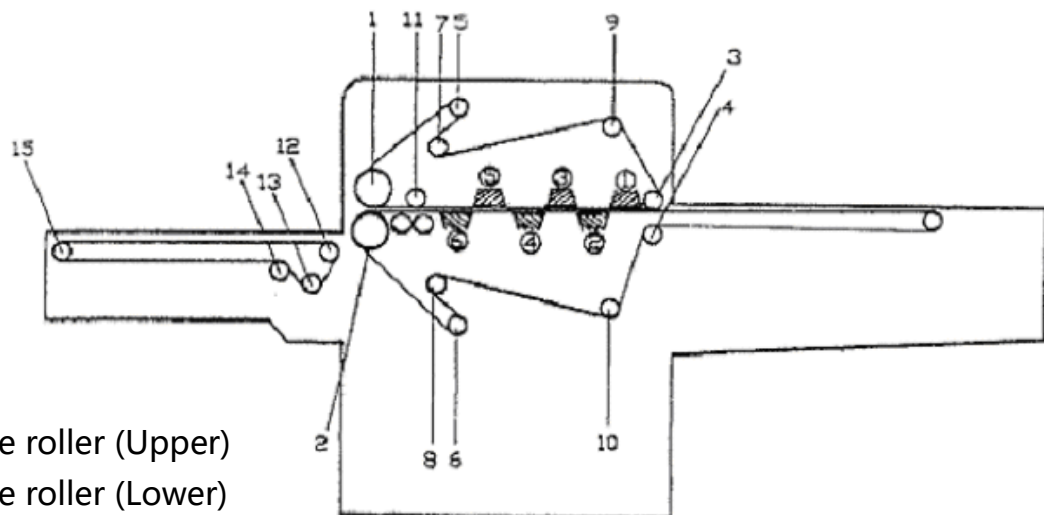
## 2. OPERATION INSTRUCTIONS :

- 1). Turn on the circuit breaker switch on the right under the operation box of the machine.
- 2). Press the power switch (Lock switch), the green lamp will be light. (When the switch locked, the power is on; when released the lock, the cooling system is running and the indicating lamp of left side will be light.) Set up the speed switch (timer button), and the motor is running.
- 3). Turning the thermostat button and set up the suitable heating temperature of front and back heater.
- 4). Turning the fusing timer button for setting the suitable fusing time. (The shortest fusing time is 5 seconds.)
- 5). Turning the pressure handle on the left side of operating box, and setting the suitable pressure. The normal pressure is around 1.0-2.5kg/cm<sup>2</sup>. The adjusting pressure range is around 0-4.0kg/cm<sup>2</sup>.
- 6). After working, please adjust the pressure handle to “0” , and press the power switch. When lock released, the machine will be start to cooling. When temperature decrease to 60°C, the machine will be automatic stop. Turn the dial of the fusing timer, and set to the proper fusing time.

3. HOW TO REPLACE THE BELT CLEANING ROD :

- 1). The cleaning rod and scraper device are attached to the back of machine.
- 2). Take out the scraper device.
- 3). The cleaning rod is attached to the position that can touch the upper and lower belt.
- 4). When loosen the screw, the cleaning rod can be easily taking away. .
- 5). Using the cotton cloth for replacing cloth, don' t use the heavy cloth in order to prevent the belt damaged.
- 6). Don' t wrap too much cloth on it in order to prevent the scraper can be set up to the original position.

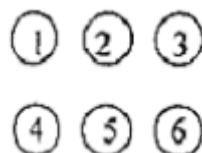
4. INNER COMPONENTS :



- 1). Pressure roller (Upper)
- 2). Pressure roller (Lower)
- 3). Feed-in roller (Upper)
- 4). Feed-in roller (Lower)
- 5). Sub tension roller (Upper)
- 6). Sub tension roller (Lower)
- 7). Tension roller (Upper)
- 8). Tension roller (Lower)
- 9). Belt warping prevention roller (Upper)
- 10). Belt warping prevention roller (Lower)
- 11). 11. Moiré roller
- 12). 12. Straight conveyor roller (Front)

\*Roller 5,6,13,15 can be adjusted to slide forward and backward.

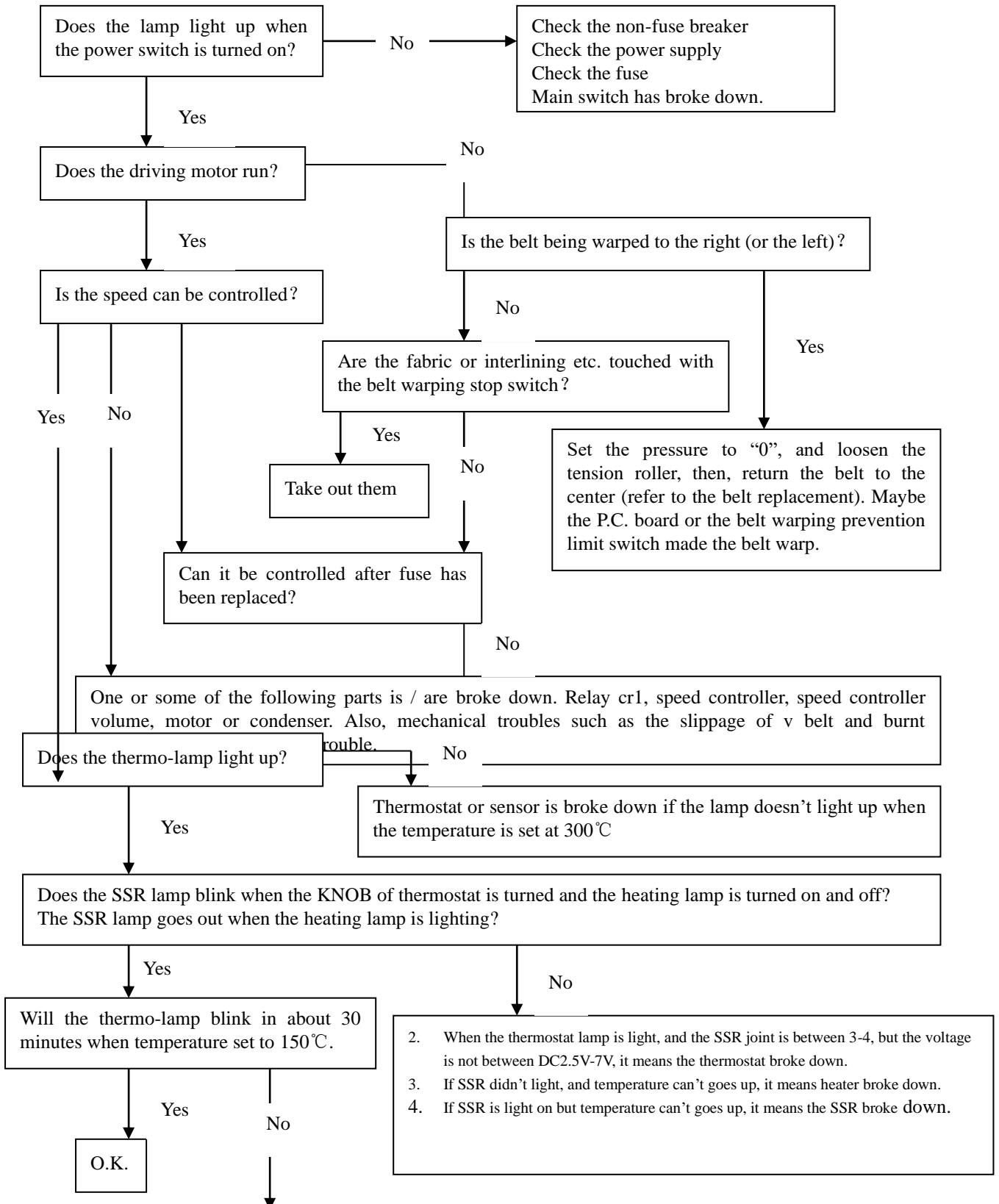
\*Roller 3,11 can be adjusted to slide up and down



# Setting combination of the heaters

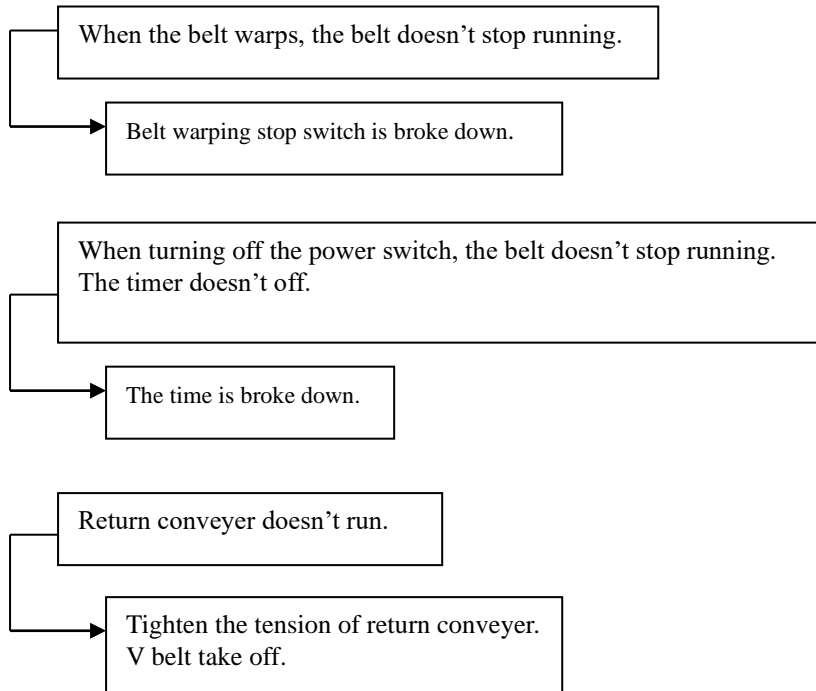
## Font /Rear Combination

### 5. TROUBLESHOOTING :



2. If the thermo-lamp doesn't light, and the SSR lamp doesn't off, the thermo-sensor is broke down.
3. If the thermo-lamp and SSR lamp don't light, the SSR is broke down, (the temperature doesn't decrease.)
4. If the thermo-lamp doesn't off, thermostat is defective. (The temperature doesn't decrease.)

## OTHERS:



※In order to prevent mechanical trouble, Be sure to lubricate and grease-up the driving section.

## 6. NOTE :

Please according to the material of fabric and interlining to set up the temperature, pressure and fusing time for fusing.

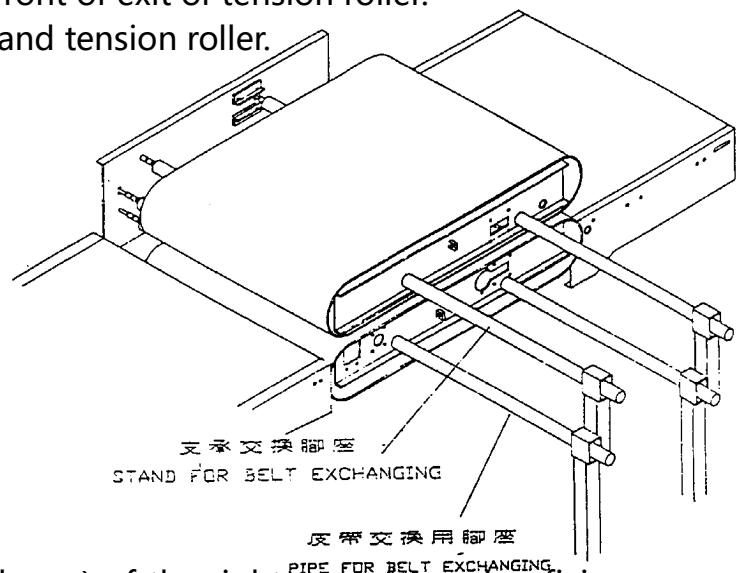
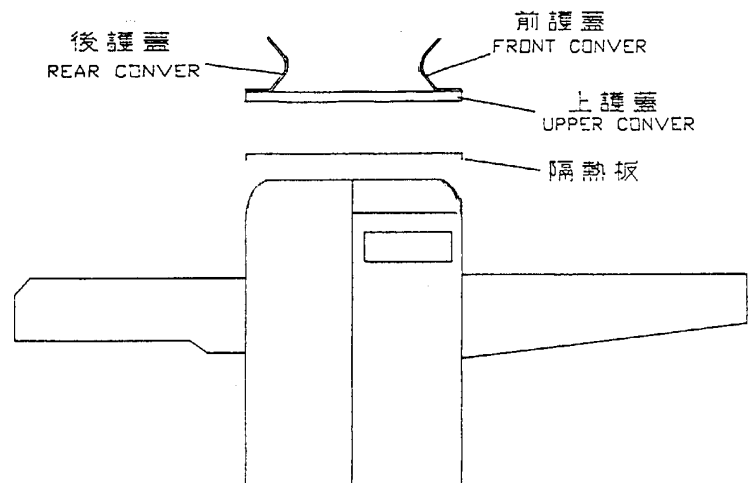
- 1). Please check the suitable fusing conditions. (Such as temperature, pressure and fusing time.)
- 2). Although the surface of belt is coated with teflon material for heatproof, but the sharp tools or ferrous pieces still will damage the belt.
- 3). Please be careful, don't put the needle, pen or scissors onto the belt.
- 4). Don't put the interlining upside down on the belt, or it will be caught in the tension roller of upper belt.
- 5). If the interlining is too long and over the fabric, it will be caught in the tension roller of lower belt.
- 6). Please open the side cover to check whether interlining has caught in the tension roller sometimes.
- 7). Replace the cloth of the cleaner with new one before it gets dirty.
- 8). It is very hard to remove the reins adhered to the belt, but it can be cleaned up

easily with "belt cleaner" .

- 9). Lubricates the bearings and gears every one or two months.
- 10). Please make sure open machine and operate it after adjusting machine to level.

## 7. HOW TO REPLACE THE BELT :

- 1). Take out the rotary strip-off device or scraper backward the machine.
- 2). Open the front and back cover.
- 3). Lift the upper cover and adiabatic plate.
- 4). Adjust the pressure to "0" , and loose the screw of pressure handle.
- 5). Turn the pressure handle to the left, and take it off.
- 6). Remove the left and the right covers.
- 7). If the machine is return type, please loose the screw of the roller at the front of the conveyor belt.
- 8). Lift the back conveyor belt and there are 4 pieces of screw can be taken out. 2 each on the left and the right side.
- 9). Lift the working table and there are 4 pieces of screw can be taken out. 2 each on the left and right side.
- 10). Remove the cover which in front of exit of tension roller.
- 11). Take out the tension spring and tension roller.
- 12). Remove the frame shaft.



- 13). Take off the nuts (upper & lower) of the right pressure spring fixing screws. \*As the nut is double type, please use the spanner to loose the nut.
- 14). Remove the pressure spring.
- 15). Loose the 5 screws which fixed in the upper and lower main shelf. Lift the pipe, which use for replacing the belt, and put the stand to support the pipe, and then

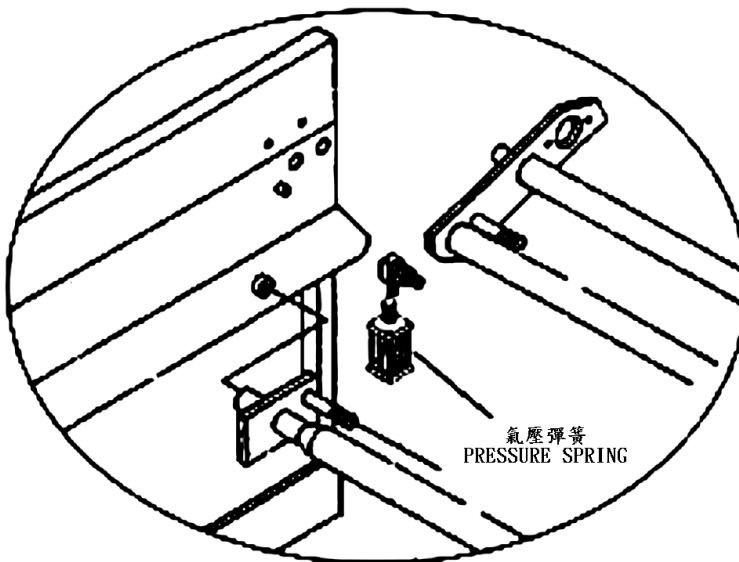
take out the belt.

※NOTE:

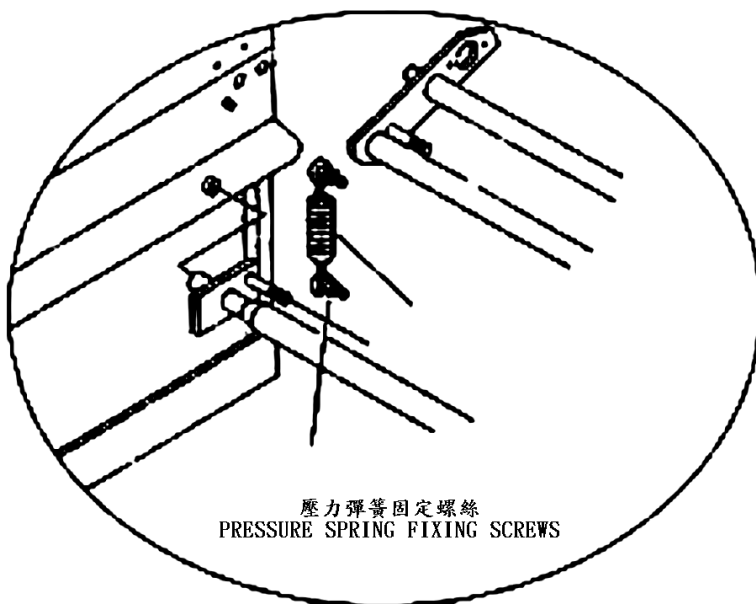
- 1). Please take out the belt carefully, don't let the belt to touch the belt warping prevention limit switch.
- 2). There is a mark to on the main shelf to let you know how to combine the parts. Please follow it to combine the parts.
- 3). After replacing the new belt, the tension spring must attached at the same time.
- 4). After combined all the parts, please set up the speed of belt at 35 seconds. When belt running 2 circles and then the machine can be working as usual.

**8. The pressure type :**

- 3). Pneumatic type



- 4). Spring type



## 9. The direction of spare parts:

### 1). Heatproof oil (white)

Put the oil into the oil tank nearby the back silicon roller. The white grease may be applied on adjusting screw shafts and bearings, so as to make the machine operates more smoothly.

### 2). Tension spring

It is for replacement, when the tension roller spring is out of function.

## 10. The basic parameter setting of FOTEK-MT-48V type temperature controller.

### 1). NOMENCLATURE :

#### A. The direction of operation panel

PV : Display of The Process Value

SV : Display of The setting Value

SET : Key of setting

F \ ◀ : Key of Shift & Function

▲ : Key of Increasing & Auto operation

OFF \ ▼ : Key of Decreasing & ON/OFF

#### B. Manual of Pilot Lamp

AT when light : Temperature controller on Auto operation Status

ON when light : Temperature controller on output and heating status

AL1 when light : First Temperature controller overheat alarm I , it means the temperature value is over or equal temperature setting value+ alarm value. PV (SV+AL1)

AL 2 Temperature controller overheat alarm II (without using)

#### C. Instruction and function of Key

(a) SET : ①Temperature setting, collocate with F \ ◀ 、 ▲ 、 OFF \ ▼ three key ,

you can set the heating temperature as you need ② Press SET key for 3 seconds , you can adjust the parameter of alarm setting . When press “SET” key for 3 seconds later, temperature controller will be shown LCK at PV position, at this moment you can adjust the numeral on SV via F \◀、▲、OFF\▼ Key, And then press SET key again after setting done. When “ALI” .” SLH” appear seriate. PV & SV will recover to the original value. If you need to enter setting of alarm, please press “SET” key for 3 seconds.

- (b) F \◀: ①This is for setting the SV to start. ②It can be used for adjusting the inside parameter of thermostat. Press the key for 3 seconds and “CT” will appear in the position of PV. And then press “SET” it will appear other inside parameters. When appear “ALT” , press again and then PV, SV will recover to show the temperature value. If you need to enter the inside for parameter setting, please press the key for 3 seconds again.
- (c) ▲: ①This is for setting the SV to step up the value. ②Press the key for 3 seconds, and the thermostat will auto operation.
- (d) OFF\▼: ①This is for setting the SV to step down the value. . ②Press the key for 3 seconds, and the thermostat will stop heating.

## 11. PARAMETER SETTING :

### 1). Alarm parameter setting

Meaning	Symbol	Primal value	Setting	Remark
Parameter Lock	LCK	0	1	When LCK=0 , unlock When LCK=1 , Only SV can be set When LCK=2 , SV&ALI can be set When LCK=3 , all the parameter can not be set.
AL1 Alarm setting	ALI	60	60	
AL2 Alarm setting	AL2	60	60	
Hysteresis of AL	ALH	1	0	
Temperature setting limit	SLH	399	240	

### 2). Internal parameter setting

Meaning	Symbol	Primal value	Setting	Remark
Cycle Time	CT	15	5	
Auto operation	AT	0		When auto operation AT=1 , Contrary AY=0
Auto operation Bias	TU	0	0	

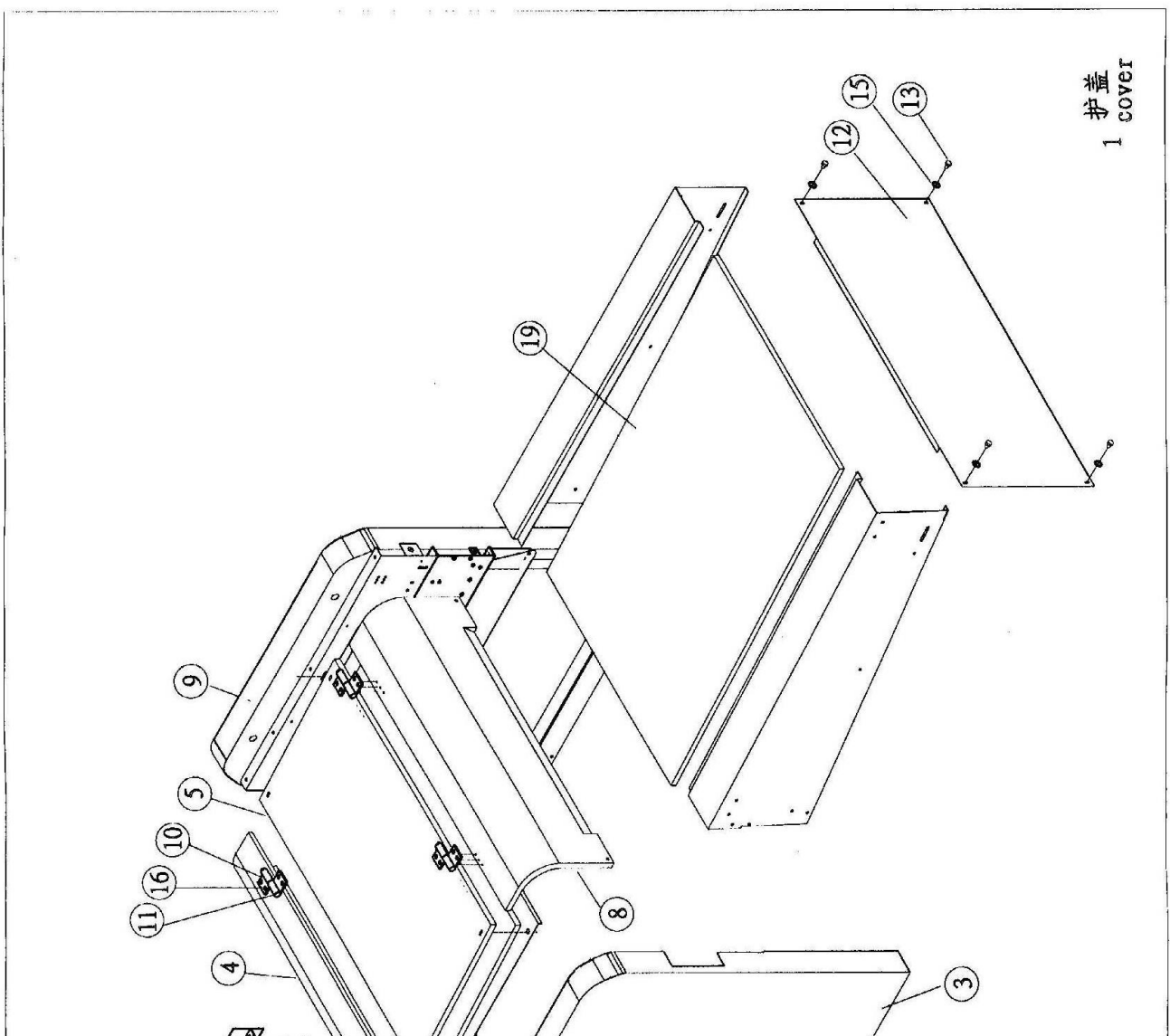


Proportional Band	P	25		When auto
Integral	I	150		
Derivative	D	41		
Hysteresis Selecting	HYS	2		
Input Selecting	INT	K	K	
Unit Selecting	UNT	°C	°C	
Decimal Point	DP	0	0	
Input Shift	SHT	0		Temperature adjustment.
Alarm Mode	ALT	0	12	

Attention:

Please don't change the following parameters arbitrarily in order to prevent machine broke down.

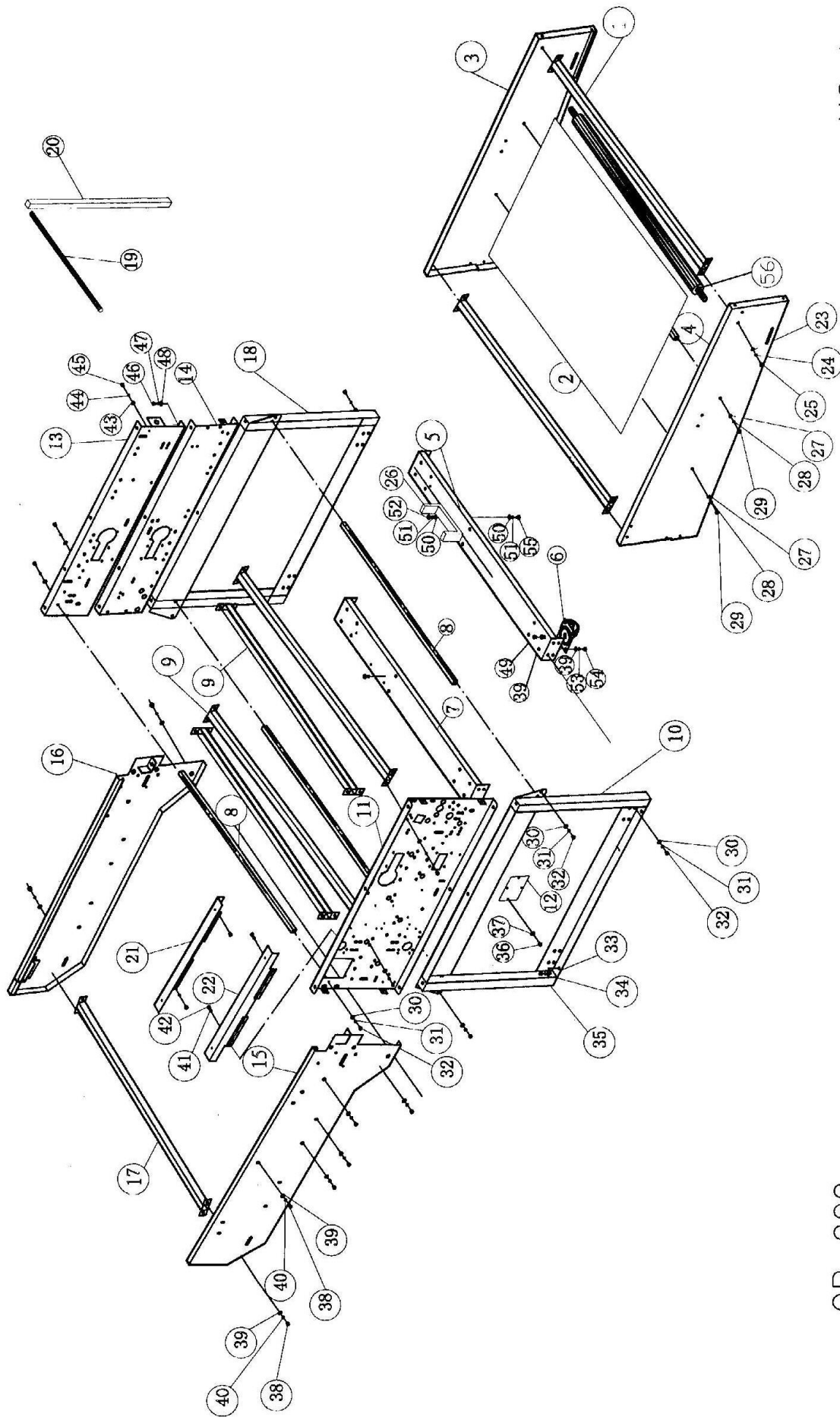
- ① AL1 alarm setting, AL2 alarm setting, Hysteretic of ALH, ALT.
- ② Before packing, please check the parameter of machine whether is correct, and set up the lock setting to Value 1.



# 機械零件目錄

NO.1

序號	部件編號	部件名稱規格		數量	備註
Ref No	Part no.	Description & spec.		Q'ty	Remark
1	90LDA005	側封板	side board	1	
	100LDA001	側封板	side board	1	
2	900A017	控制箱蓋	control box cover	1	
3	900A022	控制箱框架	control box shelf	1	
4	900A019	後護罩	the back cover	1	
	1000NA002	後護罩	the back cover	1	
5	90LDA011	上護罩	the upper cover	1	
	100LDA006	上護罩	the upper cover	1	
6	ZA3114	鋁鉑玻璃棉板	the foam	1	
7	90LDA012	隔熱板	adiabatic board	1	900/1000 系列用
	100LDA007	隔熱板	adiabatic board	1	900/1000 系列用
8	900A018	前護罩	the front cove	1	900/1000 系列用
	1000NA001	前護罩	the front cove	1	900/1000 系列用
9	900A006	大側蓋板	large side cover	1	
10	900SPB107	門栓座	bolt seat	8	
11	900SPB108	插銷	bolt	4	
12	90LDA303	前側封板	font side board	1	
	100LDA021	前側封板	font side board	1	
13	JD1314	外六角螺絲	M6*16 outside hexagon screw	8	
14	JF2006	彈墊 M6	spring coaster	8	
15	JF1011	平墊 M6	flatcoaster	8	
16	JD9041	沈頭內六角螺絲	screw	16	
17	90LDB111	門栓軸	bolt	2	
18	900A007	小側蓋板	small side cover	1	
19	90LDA304	皮帶底板	belt bottom board	1	
	100LDA022	皮帶底板	belt bottom board	1	



NO 2

OP-900

# 機械零件目錄

NO.2-1

序號	部件編號	部件名稱規格		數量	備註
Ref No	Part no.	Description & spec.		Q'ty	Remark
1	90LDA059	工作臺橫梁	Beam of working table	2	
	100LDA019	工作臺橫梁	Beam of working table	2	
2	90LDA304	皮帶底板	Belt bottom board	1	OP-900L/LA 用
	100LDA022	皮帶底板	Belt bottom board	1	OP-1000L/LA 用
3	900A101	入口側板 (左)	Enter side board(左)	1	OP-900/A/1000/A 用
	90LDA301	入口側板 (左)	Enter side board(左)	1	OP-900L/LA 1000L/LA 用
4	900A102	入口側板 (右)	Enter side board(右)	1	OP-1000/A/900/A 用
	90LDA302	入口側板 (右)	Enter side board(右)	1	OP-900/A 1000/A 用
5	90LDA033	前底架	Front bottom shelf	1	
	100LDA015	前底架	Front bottom shelf	1	
6	ZW0132	仿中古輪 3 “	Copy wheel	4	
7	90LDA032	後底架	The back shelf	1	
	100LDA014	後底架	The back shelf	1	
8	90LDB103	主體軸芯	The bearing of main body	3	
	100LDB006	主體軸芯	The bearing of main body	3	
9	90LDA026	機身橫梁	Beam of machine body	3	
	100LDA012	機身橫梁	Beam of machine body	3	
10	90LDA003	架體	Shelf body	1	
11	90LDA001	左側臂	Left side arm	1	
12	90LDA041	封板	Cover board	1	
13	90LDA021	右上側壁	Right upper side	1	
14	90LDA020	右下側壁	Right lower side	1	
15	900A013	後右側板	The back right side board	1	
16	900A014	後左側板	The back right side board	1	
17	90LDA024	輸送帶橫梁	Beam of conveyor belt	2	OP-900/L/LA 用
	100LDA013	輸送帶橫梁	Beam of conveyor belt	2	OP-1000/L/LA 用
18	90LDA002	架體	Shelf body	1	
19	90LDA066	裝皮帶擡架	The shelf of install belt	4	
20	90LDA049	上撐杆	Upper rod	2	

# 機械零件目錄

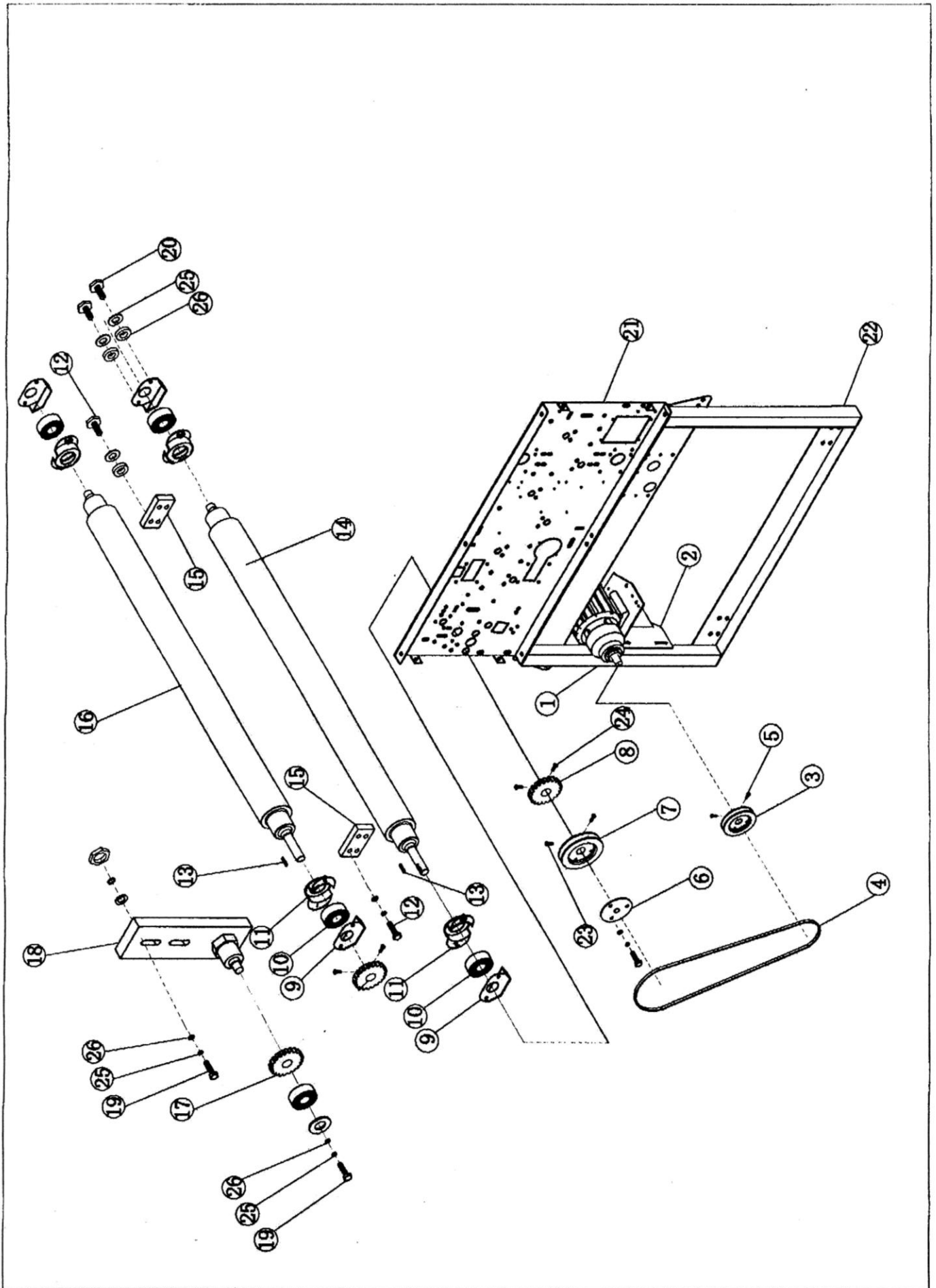
NO.2-2

序號	部件編號	部件名稱規格		數量	備註
Ref No	Part no.	Description & spec.		Q'ty	Remark
21	90LDA054	上蓋擋板	Upper cover stopper	1	
22	90LDA054	上蓋擋板	Upper cover stopper	1	
23	JF1013	平墊 8	Flat coaster	8	
24	JF2007	彈墊 8	Spring coaster	4	
25	JD1228	外六角螺絲 M8	Outside hexagon screw	4	
26	90LDA060	中間架	Middle shelf	1	
27	JF1013	平墊 8	Flat coaster	8	
28	JF2007	彈墊 8	Spring coaster	4	
29	JD1228	外六角螺絲 M8	Outside hexagon screw	6	
30	JF1013	平墊 8	Flat coaster	8	
31	JF2007	彈墊 8	Spring coaster	4	
32	JD1228	外六角螺絲 M8	Outside hexagon screw	4	
33	JM1009	外六角螺絲 M8	Outside hexagon screw	4	
34	JM1009	外六角螺絲 M8	Outside hexagon screw	4	
35	JD1354	外六角螺絲 M16	Outside hexagon screw	4	
36	JD1228	外六角螺絲 M8	Outside hexagon screw	4	
37	JF1013	平墊 8	Flat coaster	8	
38	JF1013	平墊 8	Flat co aster	8	
39	JD1228	外六角螺絲 M8	Outside hexagon screw	4	
40	JF2007	彈墊 8	Spring coaster	4	
41	JF2006	彈墊 6	Spring coaster	4	
42	JD1314	外六角螺絲 M6	Outside hexagon screw	4	
43	JF1013	平墊 8	Flat coaster	8	
44	JF2007	彈墊 8	Spring coaster	4	
45	JD1228	外六角螺絲 M8	Outside hexagon screw	4	
46	JD1228	外六角螺絲 M8	Outside hexagon screw	4	
47	JF2007	彈墊 8	Spring coalter	4	
48	JF1013	平墊 8	Flat coaster	8	
49	JD1228	外六角螺絲 M8	Outside hexagon screw	4	
50	JF1013	平墊 8	Flat coaster	8	
51	JF2007	彈墊 8	Spring coaster	4	

# 機械零件目錄

NO.2-3

序號	部件編號	部件名稱規格		數量	備註
Ref No	Part no.	Description & spec.		Q'ty	Remark
52	JD1228	外六角螺絲 M8	outside hexagon screw	4	
53	JF2007	彈墊 8	spring coaster	4	
54	JM2005	外六角螺母 M8	outside hexagon screw	8	
55	JF1013	平墊 8	flat coaster	8	
56	90LDB108	滾筒	roller	1	OP-900L/L A 用
	100LDB011	滾筒	roller	1	OP-1000L/ LA 用

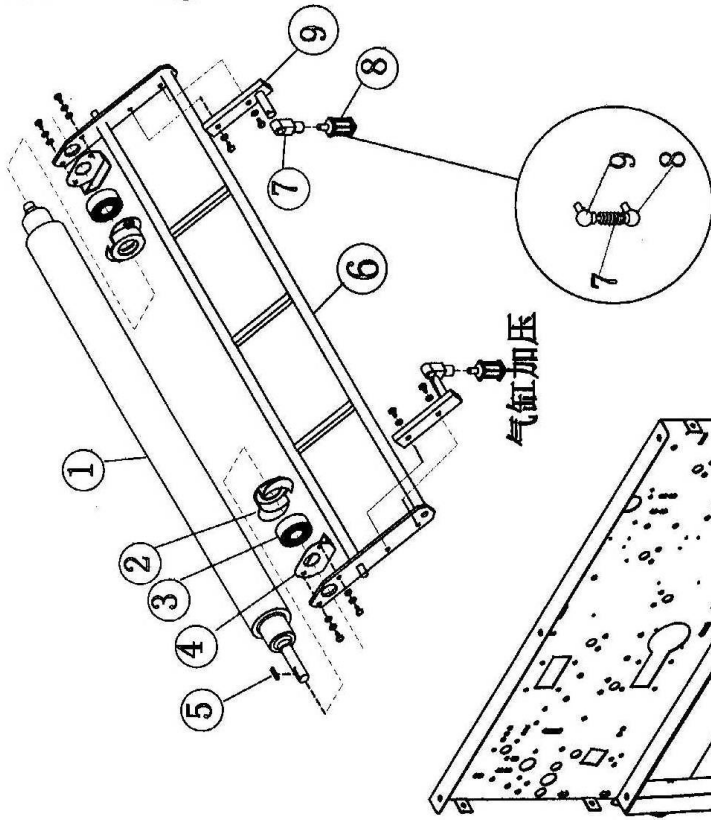
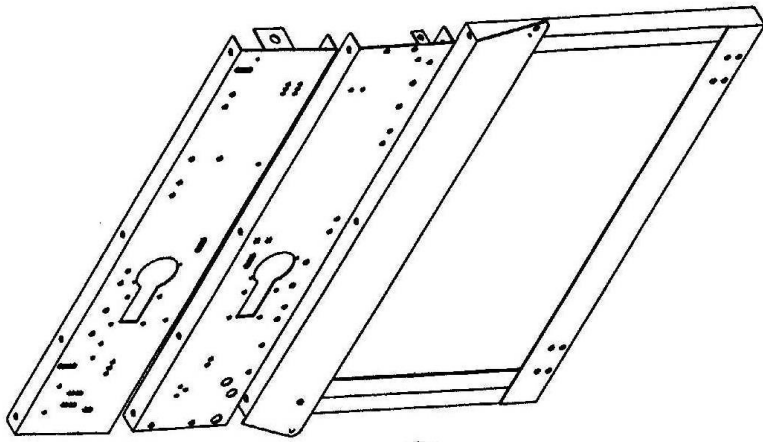




# 機械零件目錄

NO.3

序號	部件編號	部件名稱規格		數量	備註
Ref No	Part no.	Description & spec.		Q'ty	Remark
1	DM0112-1	主馬達	Main motor	1	
2	90LDA038	馬達座	Motor base	1	
3	90LDB121	馬達皮帶輪	The belt wheel of motor	1	
4	JP0114	皮帶 A-46	Belt	1	
5	JD7027	內六角凹端緊定螺釘 M6*10	Inner hexagon screw	2	
6	90LDA028	手動盤	Manual plate	1	
7	90LDB120	被動皮帶輪	Passive belt wheel	1	
8	90LDB123	矽膠滾筒齒輪	Silicic idler	1	
9	90LDA036	油壺	oiler	1	
10	JB2071	培林 6204	bearing	4	
11	90LDB134	軸承座	Bearing base	4	
12	JD2040	圓柱頭內六角 M6*16	Within hexagon screw	8	
13	JJ1003	鍵 5*5	Key	2	
14	100LDB004	上矽膠滾筒	The upper silicic roller	1	OP-1000/L/LA 用
	90LDB101	上矽膠滾筒	The upper silicic roller	1	OP-900/L/LA 用
15	90LDB132	壓力擋板	Pressure stopper	2	
16	90LDB102	下矽膠滾筒	The lower silicic roller	1	OP-900/L/LA 用
	100LDB005	下矽膠滾筒	The lower silicic roller	1	OP-1000/L/LA 用
17	90LDB124	輸送帶惰輪	The idler of conveyor	1	
18	90LDB007	惰輪座	Idler base	1	
19	JD1037	外六角螺絲 M8*20	Outside hexagon screw	2	
20	JD2041	內六角螺絲 M6*20	Inner hexagon screw	8	
21	90LDA001	左側壁	left side board	1	
22	90LDA003	架體	shelf body	1	
23	JD7037	內六角凹端緊定螺釘 M8*10	Inner hexagon nook bolt	2	
24	JD7027	內六角凹端緊定螺釘 M6*10	Inner hexagon nook bolt	4	
25	JF2007	彈墊 M8	Spring coaster	2	
26	JF1012	平墊 M8	Flat coaster	2	
27	JF2006	彈墊 M6	Spring coaster	16	
28	JF1009	平墊 M6	Flat coaster	16	



气缸加压

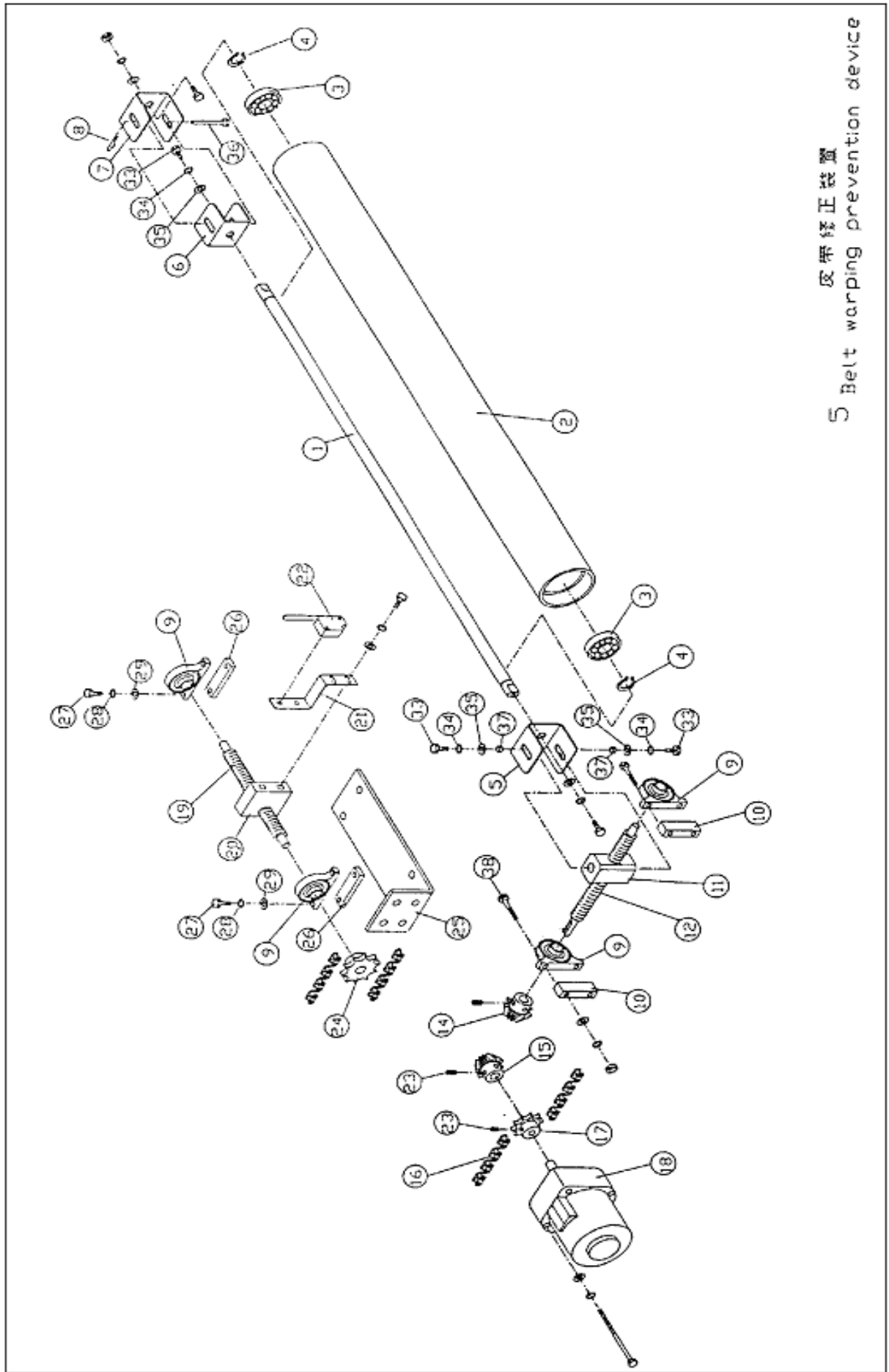
弹簧加压

壓力調整  
4 Pressure adjustable

# 機械零件目錄

NO.4

序號	部件編號	部件名稱規格		數量	備註
Ref No	Part no.	Description & spec.		Q'ty	Remark
1	90LDB102	下矽膠滾筒	The lower silicic roller	1	
	100LDB005	下矽膠滾筒	The lower silicic roller	1	
2	90LDB039	軸承座	Bearing base	6	
3	JB2021	軸承 6204	Bearing	2	
4	90LDA036	油壺	Oiler	4	
5	JJ1002	鍵 4*4	Key	2	
6	90LDA052	壓力臂架	Pressure arm shelf	1	
	100LDA018	壓力臂架	Pressure arm shelf	1	
7	JB1030	培林 SA10T/K	Bearing	2	OP-900A/LA 1000A/LA 用
	90LDB207	彈簧 $\phi$ 6.5X14 圈	Spring coaster circle	2	OP-900/L 1000/L 用
8	QG0026	氣缸 SC50-20	Cylinder	2	OP-900A/LA 1000A/LA 用
	JB1014	培林 POS-8 左牙	Bearing	2	OP-900/L 1000/L 用
9	90LDB061	氣缸支援塊 2	Cylinder of support	2	OP-900A/LA 1000A/LA 用
	JB1015	培林 POS-8 右牙	Bearing	2	OP-900/L 1000/L 用



5 皮带修正装置  
Belt warping prevention device

# 機械零件目錄

NO.5-1

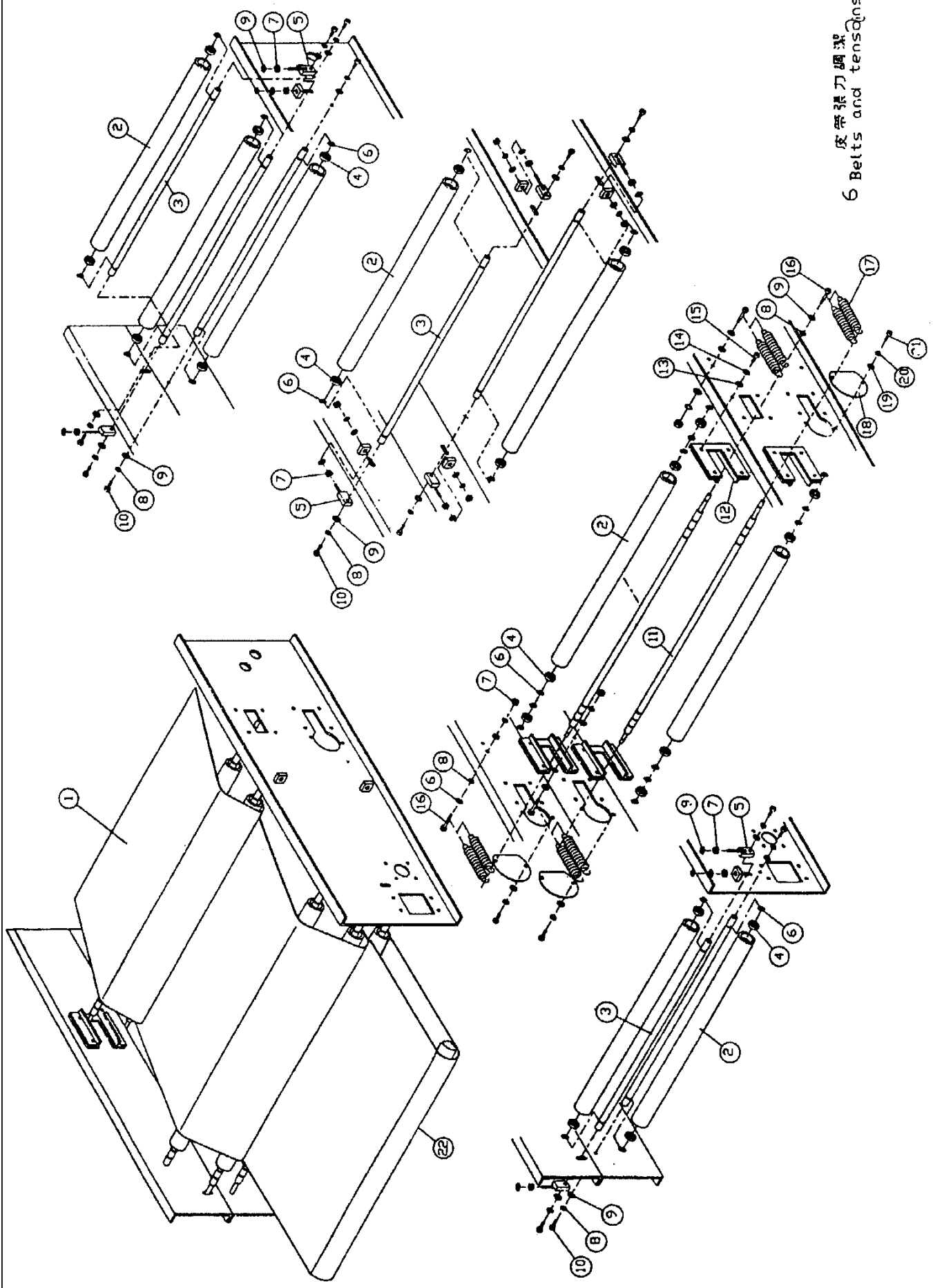
序號	部件編號	部件名稱規格		數量	備註
Ref No	Part no.	Description & spec.		Q'ty	Remark
1	90LDB110	修正軸	Redress shaft	2	
	100LDB013	修正軸	Redress shaft	2	
2	90LDB109	修正滾筒	Redress roller	2	
	100LDB012	修正滾筒	Redress roller	2	
3	JB2071	軸承 6204C4	Bearing	2	
4	JC1016	軸用擋圈 $\phi 18$	Elasticity stopper for axes	2	
5	90LDA055	修正固定耳	Redress fixer	2	
6	90LDA015	修正固定耳	Redress fixer	2	
7	90LDA023	修正固定耳	Redress fixer	2	
8	JX0005	開口鎖	Cotter	2	
9	JB1006	軸承 UP000	Bearing	4	
10	90LDB130	大軸承墊塊	Big bearing coaster	4	
11	90LDB112	修正滑塊	Redress slide piece	2	
12	90LDB118	修正螺杆	Redress screw rod	2	
14	90LDB126	傘形齒輪組 M1.5*20/20T	Umbrella rowel	2	
15	90LDB126	傘形齒輪組 M1.5*20/20T	Umbrella rowel	2	
16	JL1007	2 分鏈條 38 目	Chain	2	
17	90LDB129	修正鏈輪 RS25*14T	Redress motor	2	
18	DM0344-2	調整馬達 110V YN80-25/JB50G1032	Reeress motor	2	
19	90LDB119	修正螺杆	Redress screw rod	2	
20	90LDB133	修正墊塊	Redress coaster	2	
21	90LDA031	下修正開關座	Lower micro switch base	1	
22	DK0101	修正開關 AH7153360-5A	Micro switch	2	
23	JD7029	緊定螺釘 M6	Fixed screw	2	
24	90LDB128	修正鏈輪 RS25*20T	Redress chain wheel	2	
25	90LDA050	修正支援座	Redress support base	2	
26	90LDB131	小軸承座	Small bearing base	2	
27	JD1314	外六角螺栓 M6	Outside hexagon screw	8	
28	JF2006	彈墊 6	Spring coaster	8	
29	JF1011	平墊 6	Flat coaster	8	
30	JD1102	外六角螺栓 M4	Outside hexagon screw	4	

# 機械零件目錄

NO.5-2

序號	部件編號	部件名稱規格		數量	備註
Ref No	Part no.	Description & spec.		Q'ty	Remark
31	JF2004	彈墊 4	Spring coaster	4	
32	JF1011	平墊 6	Flat coaster	4	
33	JD1228	外六角螺栓 M8	Outside hexagon screw	8	
34	JF2007	彈墊 8	Spring coaster	8	
35	JF1013	平墊 8	Flat coaster	8	
36	90LDB122	銷	Shaft	2	
37	90LDB135	修正襯套	Redress bushing	4	
38	JD1314	外六角螺栓 M6	Outside hexagon screw	8	

皮帶張力調整器  
6 Belts and tensioners

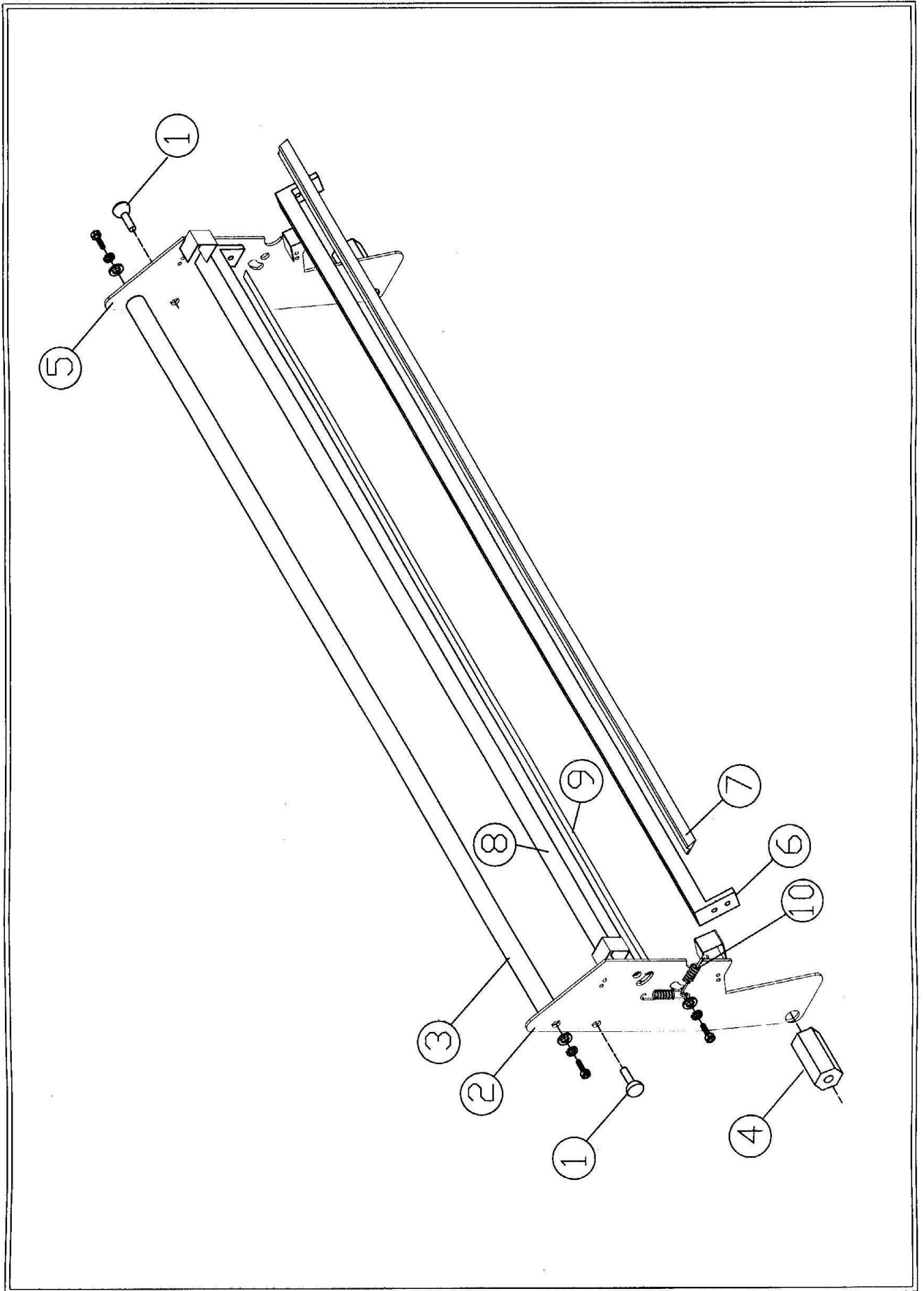


# 機械零件目錄

NO.6

序號	部件編號	部件名稱規格		數量	備註
Ref No	Part no.	Description & spec.		Q'ty	Remark
1	JP2001	上皮帶 910*2450	Upper belt	1	OP-900/A 用
	JP2001	下皮帶 910*2450	Lower belt	1	OP-900/A 用
	JP2002	上皮帶 1010*2450	Upper belt	1	OP-1000/A 用
	JP2002	下皮帶 1010*2450	Lower belt	1	OP-1000/A 用
2	90LDB108	滾筒	Roller	9	加長型用 10
	100LDB012	滾筒	Roller	9	
3	90LDB103	主體軸芯	Bearing of main body	10	
	100LDB006	主體軸芯	Bearing of main body	10	
4	JB2071	軸承 6204C4	Bearing	14	
5	90LDA061	修正座	Redress base	8	
6	JC1016	軸用彈性擋圈 $\phi 18$	Shaft spring washer	2	
7	JM2005	螺母	Nut	4	
8	JH1022	彈簧 $\phi 1.4 * \phi 11 * 53 * 14$	Spring	4	
9	JF1013	平墊 6	Flat coaster	4	
10	JD1228	螺釘 M6	Screw	4	
11	90LDB107	張力滾輪軸芯 the	Tension roller of bearin	2	
	100LDB010	張力滾輪軸芯	The tension roller of bearin	2	
12	90LDA053	張力位置導座	The tension position base	4	
13	JF1011	平墊 8	Flat coaster	16	
14	JF2006	彈墊 8	Spring coaster	16	
15	JD1314	緊定螺釘 M6	Fixed screw	16	
16	JD1228	緊定螺釘 M8	Fixed screw	4	
17	JH2051	張力彈簧 $\phi 2.3 * \phi 20 * 39.5 * 18$	Tension spring	8	
18	90LDA041	蓋片	Cover piece	3	
19	JF1011	平墊 5	Flat coaster	4	
20	JF2006	彈墊 5	Spring coaster	4	
21	JD7111	緊定螺釘 M5	Fixed screw	4	
22	JP2038	下皮帶 910X4850	Lower belt	1	OP-900L/LA 用
	JP2030	下皮帶 1010X4850	Lower belt	1	OP-1000L/LA 用

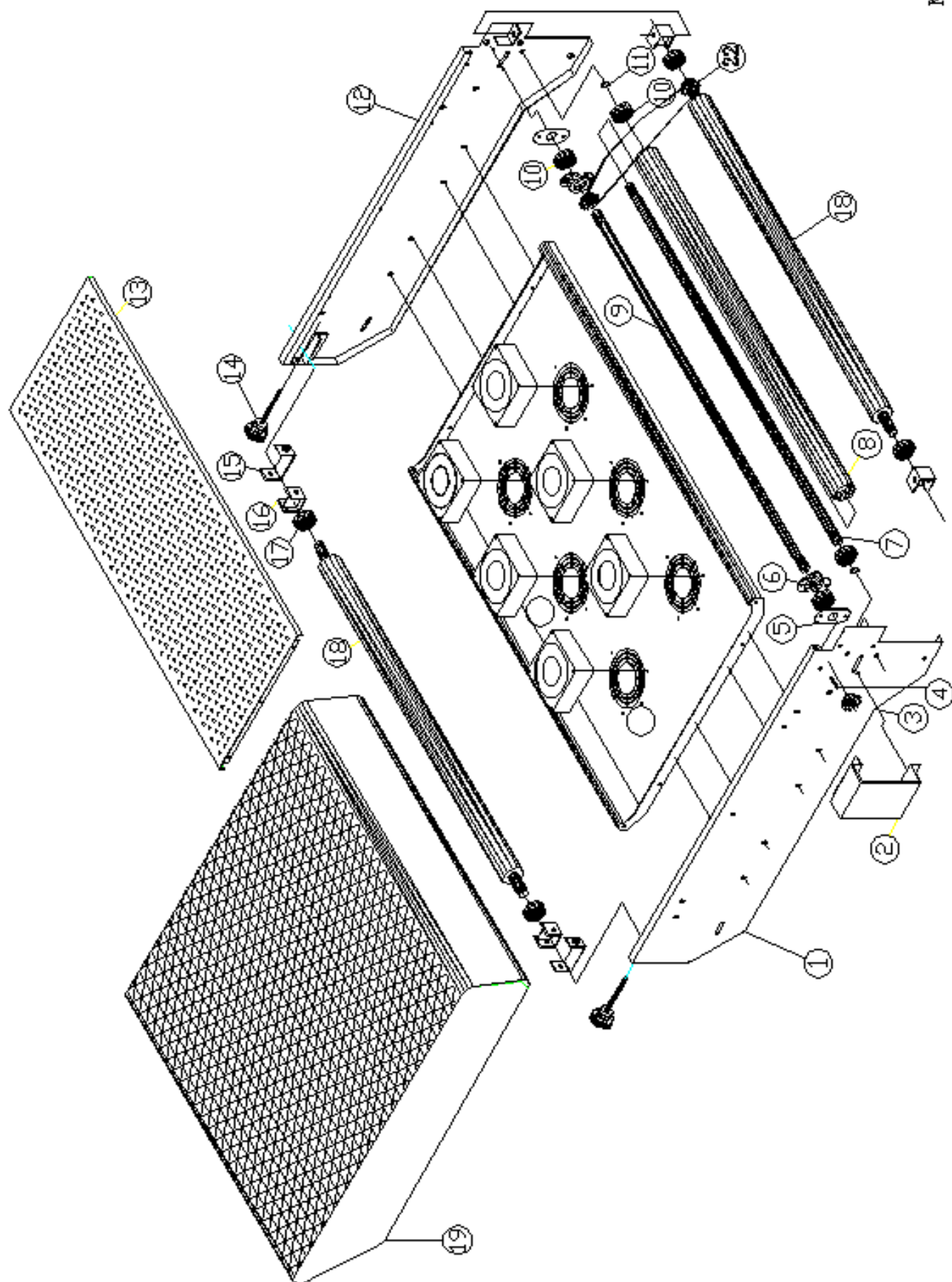




# 機械零件目錄

NO.7

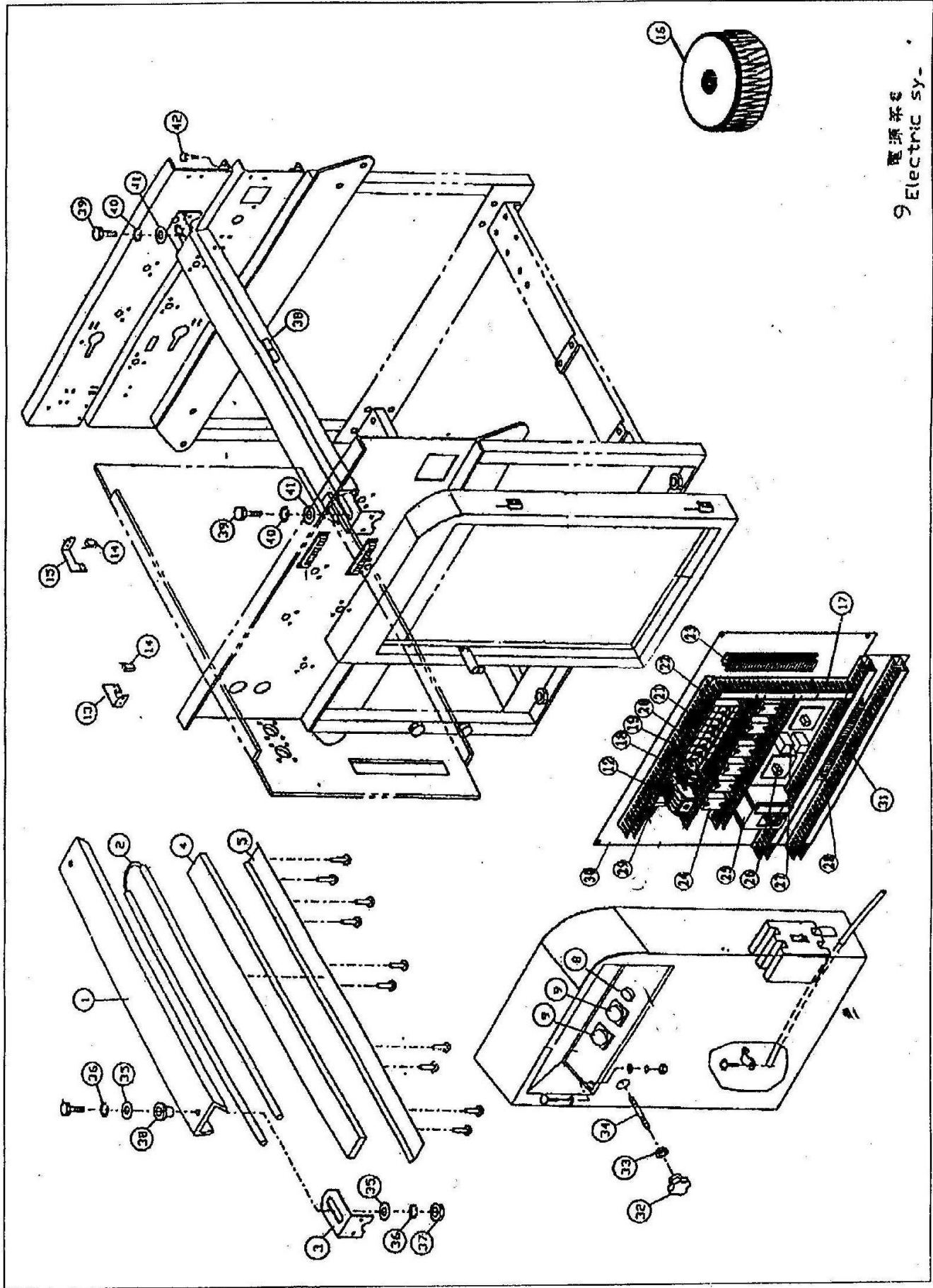
序號	部件編號	部件名稱規格		數量	備註
Ref No	Part no.	Description & spec.		Q'ty	Remark
1	900B107	鏢釘	Nut	4	
2	90LDA250	左刮片座組	Left doctorblade	1	
3	90LDB301	刮片橫軸	Doctor blade abscissa axis	1	
4	900B106	端塞	End play	2	
5	90LDA251	右刮片座組	Right doctor blade seat suit	1	
6	90LDA252	刮片座	Doctor blade seat	2	
7	ZA3209	刮片	Doctor blade	2	
8	90LDA314	清潔布杆	Fabric-cleaning pole	2	
9	JH2050	拉伸彈簧	Pulling spring	4	
10	90LDA253	清潔布	Fabric-cleaning pole pressing piece	4	



# 機械零件目錄

NO. 8

序號	部件編號	部件名稱規格		數量	備註
Ref No	Part no.	Description & spec.		Q'ty	Remark
1	900A014	後右側板	The back right side board	1	
2	90LDA039	齒輪蓋	The cover of rowel	1	
3	90LDB125	輸送帶齒輪 M2.5*20T	The rowel of conveyor	1	
4	JJ0003	平鍵 5*35	Flat key	1	
5	90LDA037	軸承蓋板	The cover of bearing	2	
6	90LDB134	軸承座	Bearing base	6	
7	900B005	輸送帶滾輪軸	The wheel of conveyor	1	
	1000NB002	輸送帶滾輪軸	The wheel of conveyor	1	
8	JB2071	軸承 6204	Front wheel of conveyor	2	
9	900A013	後左側板	Back left side board	1	
10	900A201	冷卻罩板	Cooling cover	1	
	1000NA004	冷卻罩板	Cooling cover	1	
11	ZW0058	手柄 M10	Handle	2	
12	1600A135	調整座	Whole base	2	
13	1600A134	培林座 (右)	Bearing base (right)	2	
14	JB2018	培林 6202	Bearing	4	
15	1600A133	培林座 (左)	Bearing base (left)	2	
16	900B002	輸送帶前滾筒	Front roller of conveyor	1	
	100LEB003	輸送帶前滾筒	Front roller of conveyor	1	
17	JP2007	網帶 900*2190	Mesh belt	1	
	JP2203	網帶 1000*2190	Mesh belt	1	
18	1600B148	輸送帶鏈輪	The sprocket wheel of conveyor	2	
19	900A201	冷卻箱體	Cooling box	1	
	1000NA003	冷卻箱體	Cooling box	1	
20	DM0207	風扇 130*130*50	Fan	6	



電源开关  
Electric sy-

# 機械零件目錄

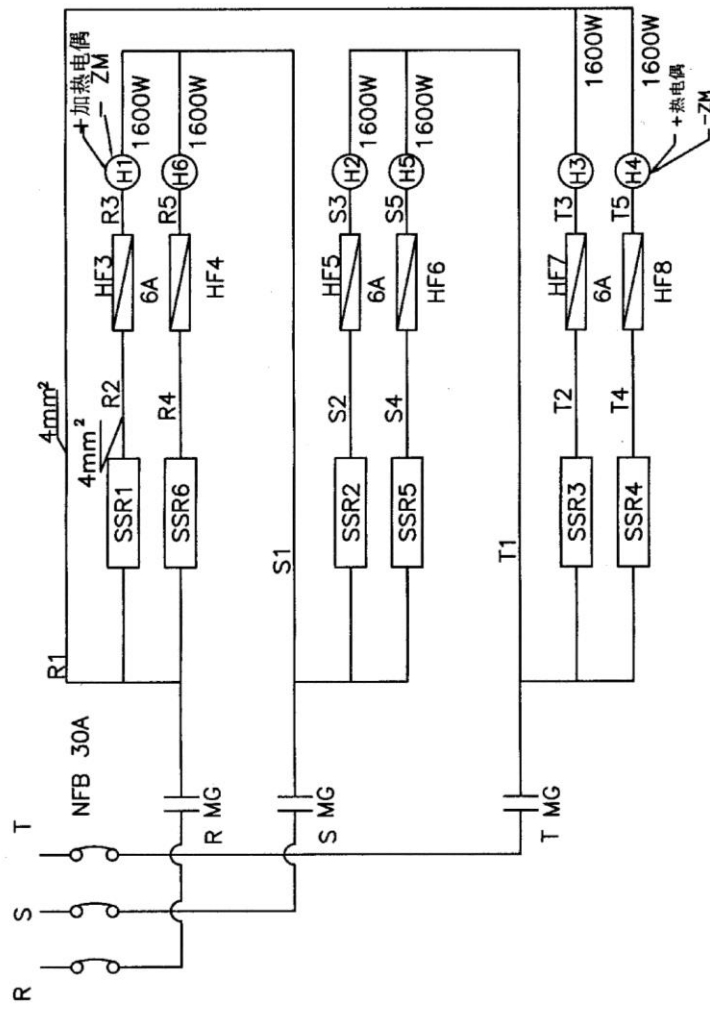
NO.9-1

序號	部件編號	部件名稱規格		數量	備註
Ref No	Part no.	Description & spec.		Q'ty	Remark
1	90LD113	電熱座	heating base	6	OP-900/L/LA 用
	100LDB014	電熱座	heating base	6	OP-1000/L/LA 用
2	900B003	發熱管	heater	12	OP-900/L/LA 用
	100LDB031	發熱管	heater	12	OP-1000/L/LA 用
3	90LDA034	電熱片座	heating piece base	12	
4	ZA3113	保溫棉	foam	4	
5	90LDB114	電熱器護蓋	cover of heater	6	OP-900/L/LA 用
	100LDB015	電熱器護蓋	cover of heater	6	OP-1000/L/LA 用
7	DA0103	黃色按鈕開關	yellow switch	1	
8	DZ0701	電位器 B502(20S)	potential	1	
9	DZ0229-1	溫度控制器 MT-48E	thermostat	2	
10	DA0102	綠色按鈕開關	green switch	1	
11	DZ0132	計時器 AH3-3 60M 220V/AC	timer	1	
12	DJ0125	接觸器 LCID3210M7-220V	connector	1	
13	90LDA029	停止開關(左)	stop switch(left)	2	
14	DK0101	修正開關 AH715346-10	micro switch	1	
15	90LD030	停止開關(右)	stop switch(right)	1	
16	DB0204	變壓器 380.220V/110.10V 500VA	transformer	1	
17	DF1214	線槽 310×25×50	wire tank	1	
18	DJ0120	接觸器 LCID1810-220V	connector	1	
19	DF0304	RT14-20 4A 保險管	fuse	2	
20	DF0201	RT14-20 保險管座	heating base	8	
21	DF0308	RT14-20 16A 保險管	fuse	6	
22	DF1214	線槽 350×25×50	wire tank	1	
23	DF0107	端子排 20P15A	terminal row	1	
24	DJ0217	固態繼電器 SSR-25DA-H	solid relay	6	
25	DZ0302	變頻器 MID043WIX	transformer	1	
26	DT0104	90LD 修正機板	redress machine board	2	
27	DM0403	電容器 6uf	capacity	2	
28	DF0107	端子排 20P15A	terminal row	1	
29	DJ0303A	MY4 底座 PYF14A	MY4 pedestal	1	

# 機械零件目錄

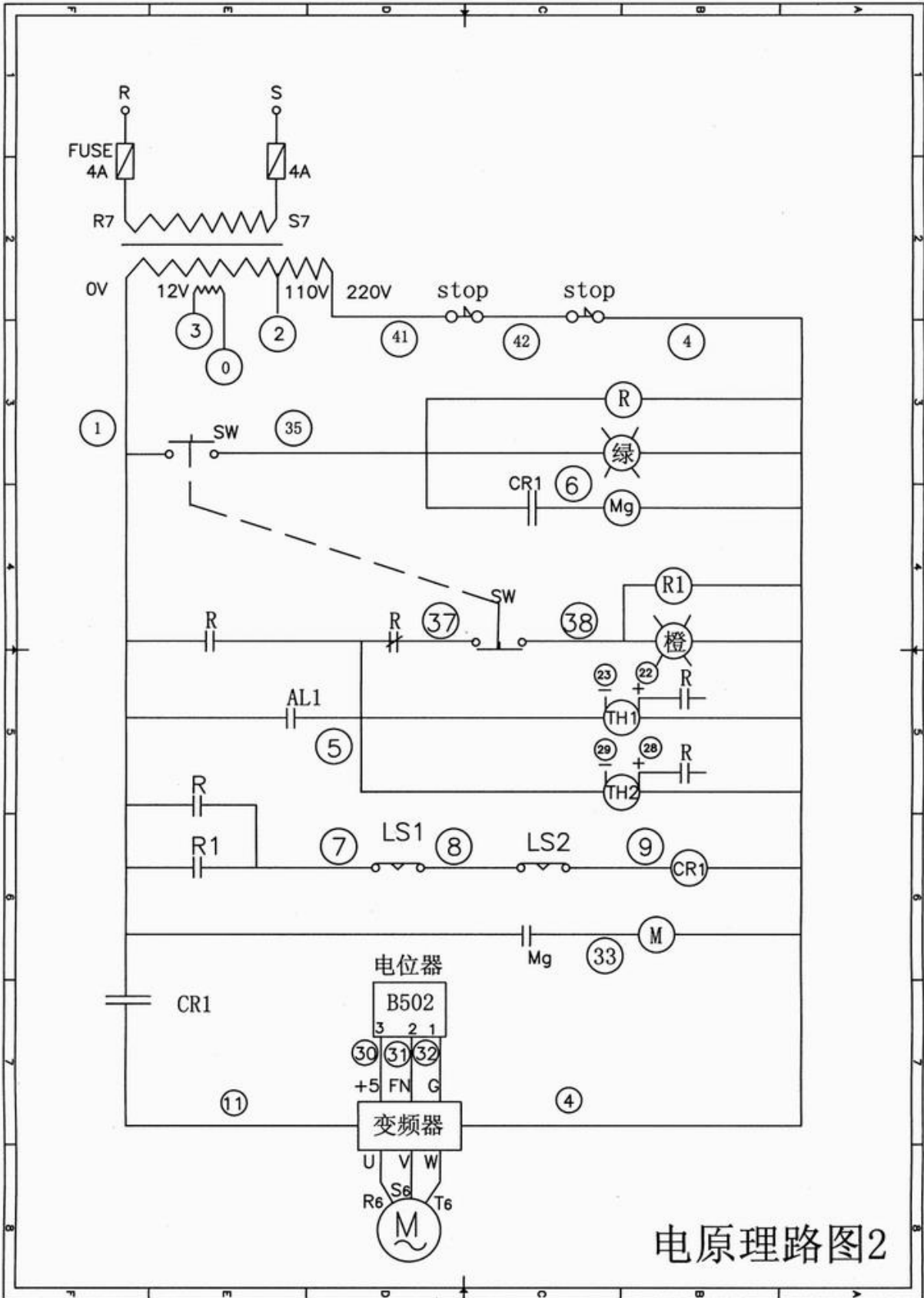
NO.9-2

序號	部件編號	部件名稱規格		數量	備註
Ref No	Part no.	Description & spec.		Q'ty	Remark
30	90LDA057	配電板二	switch board(二)	1	
31	DF1214	線槽 440x25x50	wire tank	1	
32	ZW0055	梅花手柄 M10	handle	1	
33	JM1005	外六角螺母 M8	outside hexagon screw	1	
34	JD1226	外六角螺絲 M8	outside hexagon screw	5	
35	JF1012	平墊 8	flat coaster	5	
36	JF2007	彈墊 8	spring coaster	5	
37	JM1005	外六角螺母 M8	outside hexagon screw	1	
38	450G0037	電容 6 $\mu$ F220V	capacity	1	
39	JD1226	外六角螺絲 M6	outside hexagon screw	2	
40	JF1009	平墊 6	flat coaster	2	
41	JF2006	彈墊 6	spring coaster	2	
42	JD1226	外六角螺絲 M6	outside hexagon screw	2	

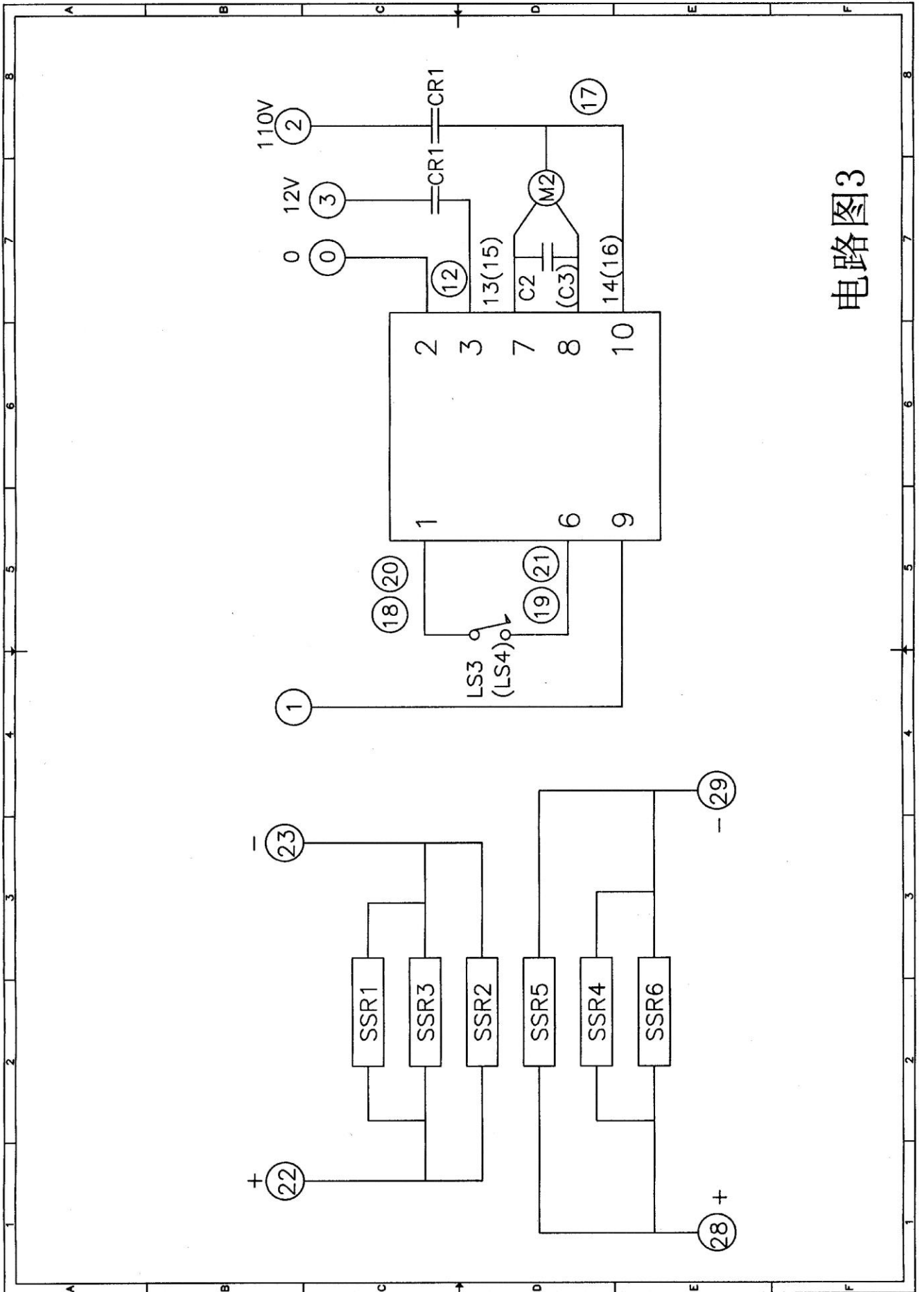


900主电路图3p 220V

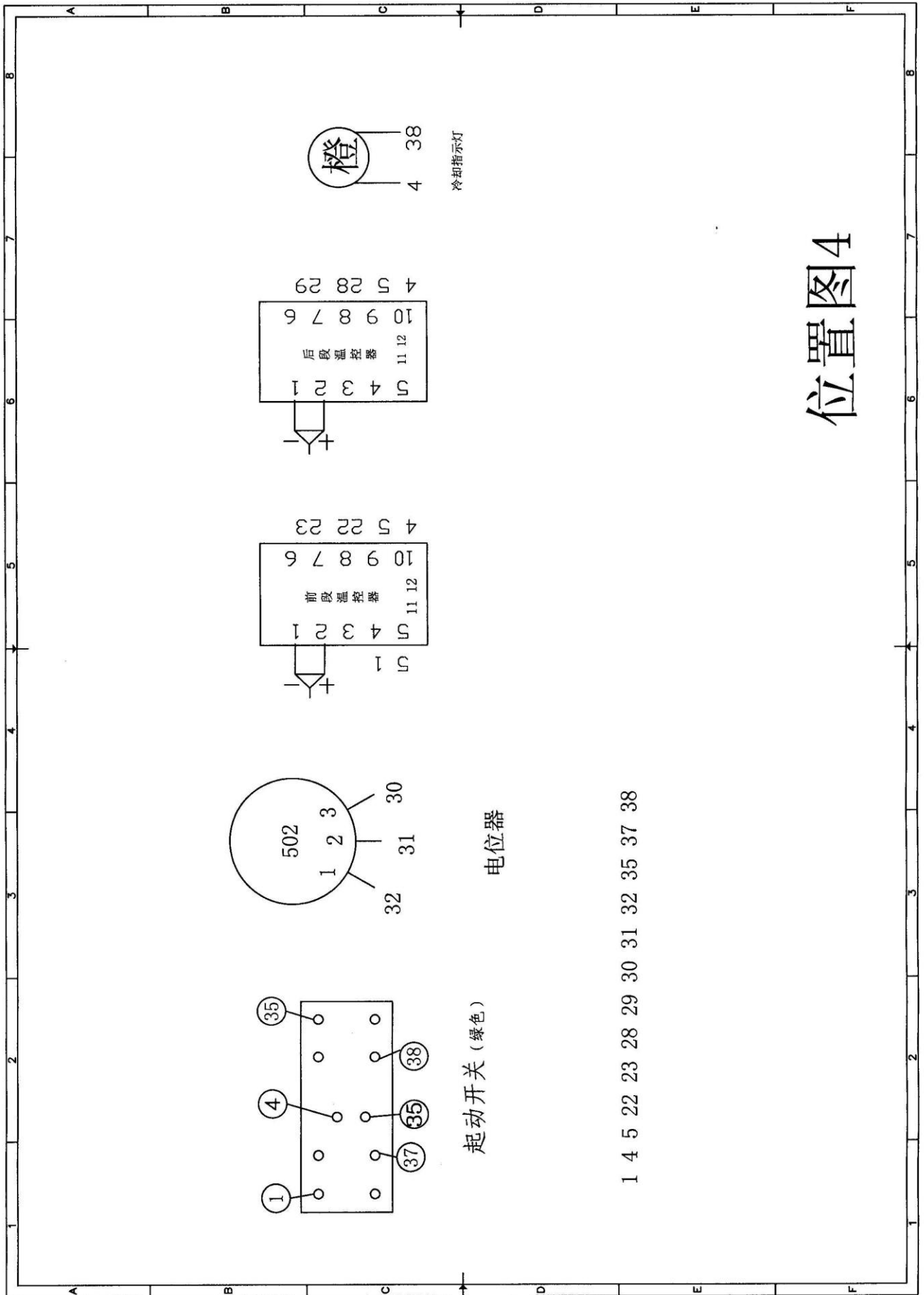




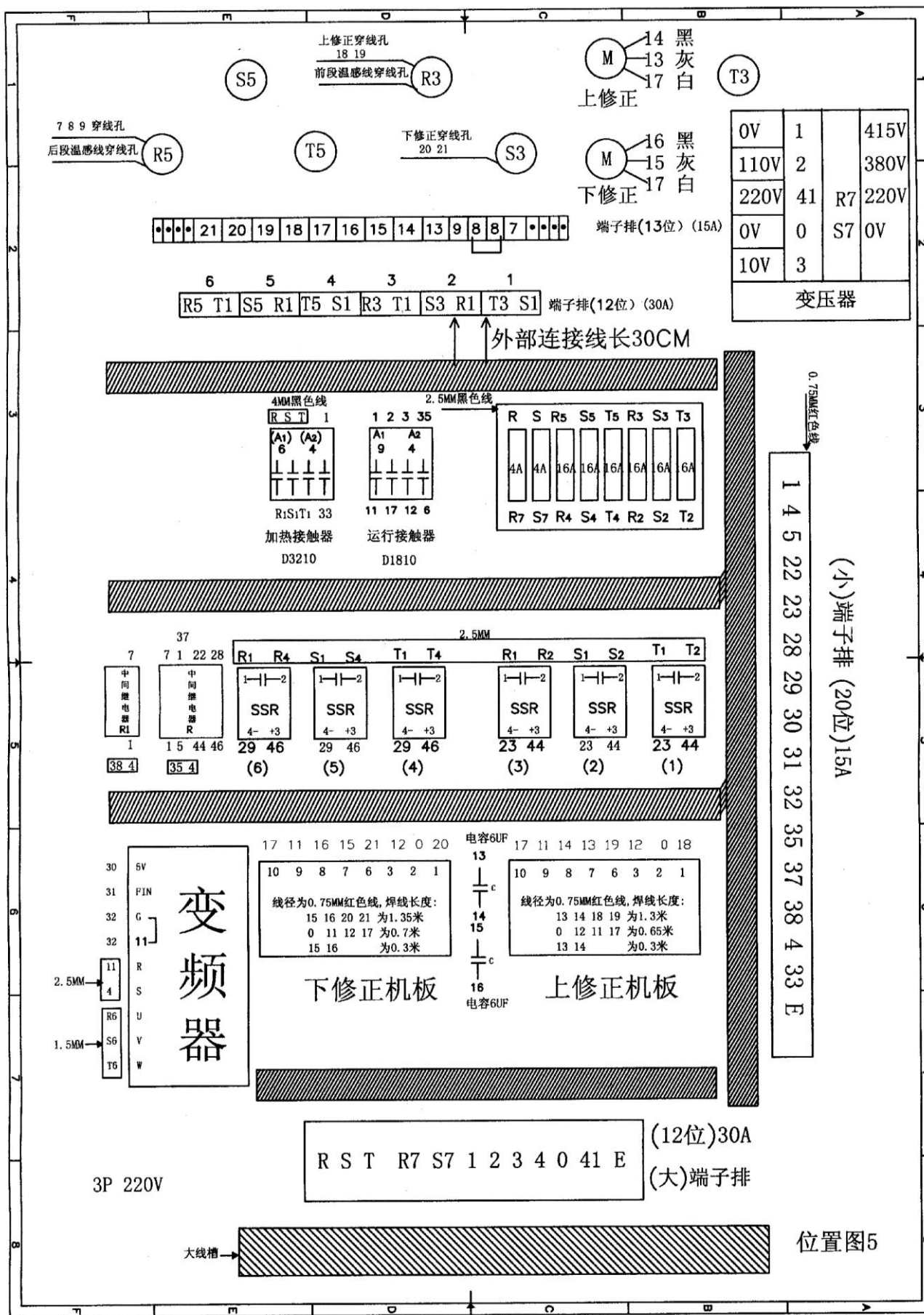
电原理路图2



电路图3



位置图4



0V	1		415V
110V	2		380V
220V	41	R7	220V
0V	0	S7	0V
10V	3		

变压器

0.75MM红色线  
1 4 5 22 23 28 29 30 31 32 35 37 38 4 33 E

(小)端子排 (20位)15A

上修正穿孔线  
18 19  
前段温度感线穿孔线 R3

7 8 9 穿孔线  
后段温度感线穿孔线 R5

下修正穿孔线  
20 21  
S3

M 14 黑  
13 灰  
17 白  
上修正

M 16 黑  
15 灰  
17 白  
下修正

端子排(13位) (15A)

端子排(12位) (30A)

外部连接线长30CM

4MM黑色线  
R S T 1  
(A1) (A2)  
6 4  
R1S1T1 33  
加热接触器  
D3210

2.5MM黑色线  
1 2 3 35  
A1 A2  
9 4  
11 17 12 6  
运行接触器  
D1810

R S R5 S5 T5 R3 S3 T3  
4A 4A 16A 16A 16A 16A 16A  
R7 S7 R4 S4 T4 R2 S2 T2

37  
7 7 1 22 28  
中间继电器 R1  
1 38 4  
中间继电器 R  
15 44 46 35 4  
R1 R4 S1 S4 T1 T4  
SSR SSR SSR  
4- +3 29 46 29 46 29 46  
(6) (5) (4)  
R1 R2 S1 S2 T1 T2  
SSR SSR  
4- +3 23 44 23 44  
(3) (2) (1)

30 6V  
31 PIN  
32 G  
32 11  
R  
2.5MM 11  
4  
S  
R6  
1.5MM S6  
U  
T6  
W  
变频器

17 11 16 15 21 12 0 20  
10 9 8 7 6 3 2 1  
线径为0.75MM红色线, 焊线长度:  
15 16 20 21 为1.35米  
0 11 12 17 为0.7米  
15 16 为0.3米  
下修正机板

电容6UF  
13  
14  
15  
16  
电容6UF  
17 11 14 13 19 12 0 18  
10 9 8 7 6 3 2 1  
线径为0.75MM红色线, 焊线长度:  
13 14 18 19 为1.3米  
0 12 11 17 为0.65米  
13 14 为0.3米  
上修正机板

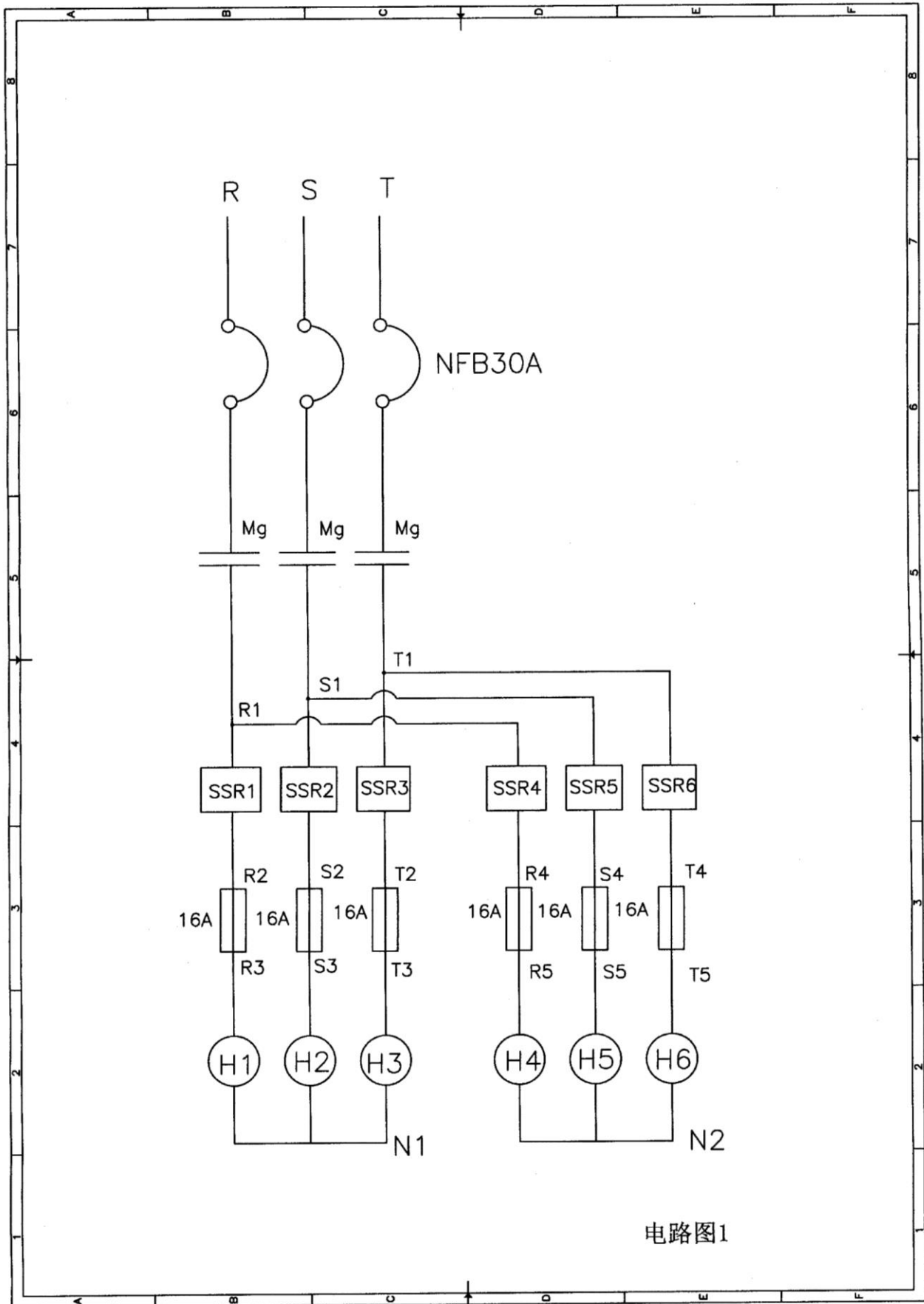
3P 220V

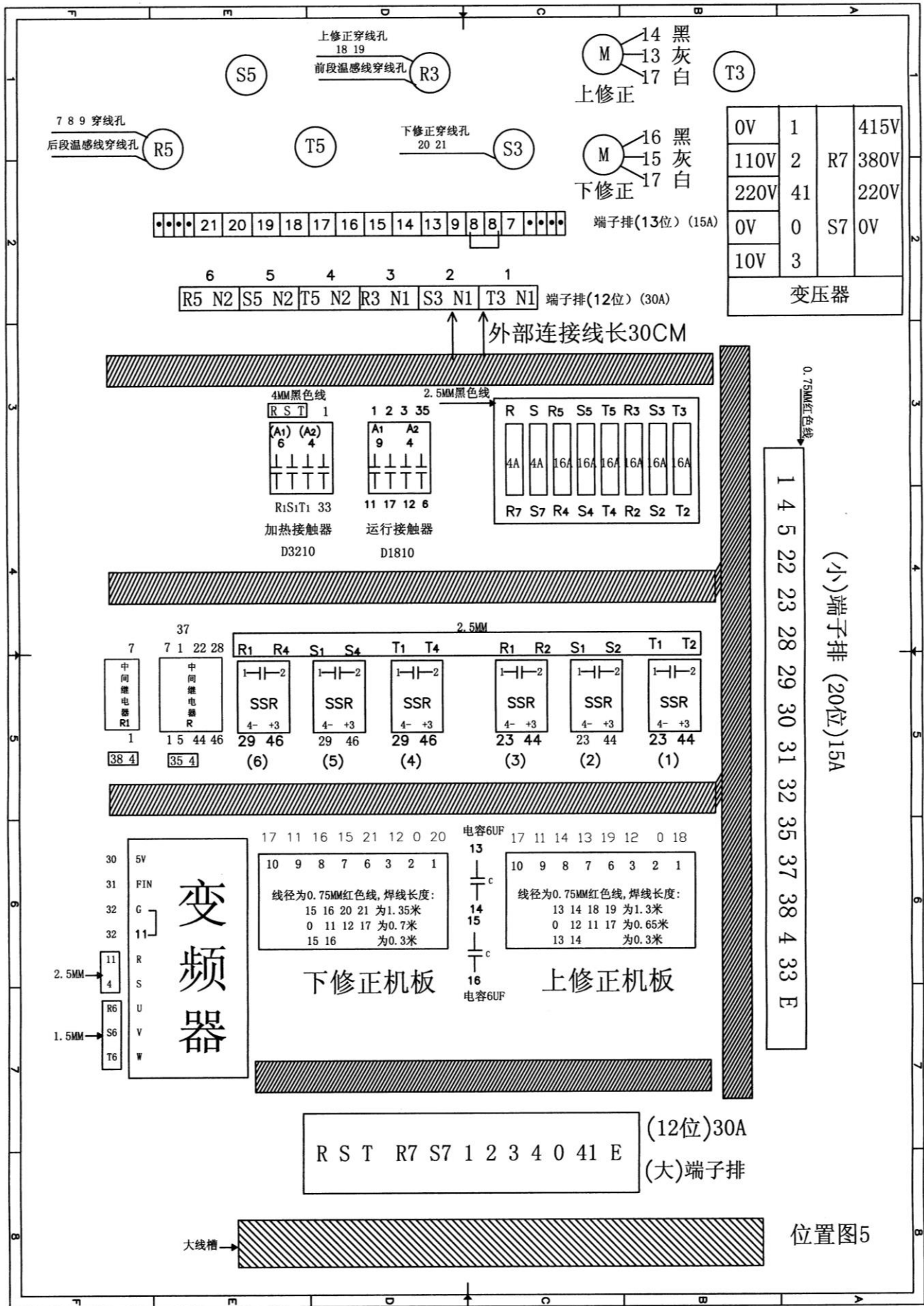
R S T R7 S7 1 2 3 4 0 41 E (12位)30A  
(大)端子排

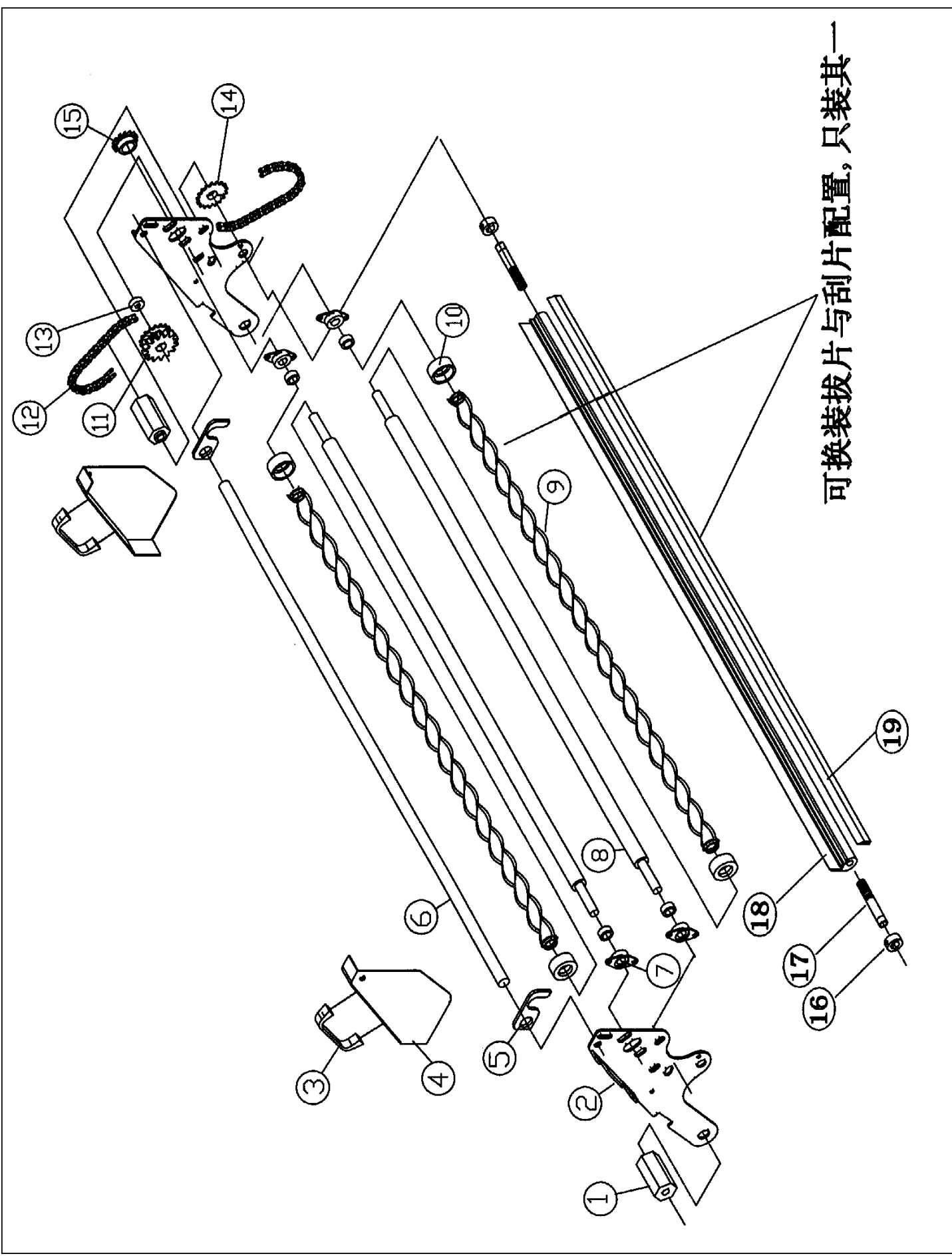
大线槽

位置图5

# 3P/380V







# 機械零件目錄

NO.7

序號	部件編號	部件名稱規格		數量	備註
Ref No	Part no.	Description & spec.		Q'ty	Remark
1	900B105	端塞	Tap	2	
2	900A302	撥片座	Scraper base	各一	
3	ZW0060	A-303 把手 100×25×14	Handle	2	
4	900A303	撥片座護罩	Scraper base cover	各一	
5	900A301	固定片	Fixed plate	2	
6	900B102	連杆	Rod	1	OP-900/L/LA 用
	1000NB001	連杆	Rod	1	OP-1000/L/LA 用
7	JB1023	培林 FL001	Bearing	4	
8	90LDB353	拔片杆芯軸	The axis of Scraper rod	2	OP-900/L/LA 用
	100LDB019	拔片杆芯軸	The axis of scraper rod	2	OP-1000/L/LA 用
9	900SPB059	拔離片	Plate	2	OP-900/L/LA 用
	100LDB010	拔離片	Plate	2	OP-1000/L/LA 用
10	100LEB012	拔片器止環	Stop ring of scraper	4	
11	900SPB054	惰輪	Idler	1	
12	JL1005	2 分鏈條	Chain	1	
13	JB2015	培林 607	Bearing	2	
14	900SPB055	撥片鏈輪	Chain wheel for scraper	1	
15	900B104	撥片齒輪	Rowel for scraper	1	
16	900SPB103	下刮片座止環	Stop ring of lower scraper base	2	
17	900SPB102	下刮片座支柱	Hold of lower scraper base	2	
18	900SPB101	下刮片座	Lower scraper base	1	
19	ZA3220	刮片 920MMX32MMX3MM	Scraper	1	OP-900/L/LA 用
	ZA3219	黑色刮片	Black scraper	1	OP-1000/L/LA 用



**隨機工具及附件一覽表** THE ATTACHED TOOLS AND FORMS

序號	部件編號	部件名稱規格		數量	備註
Ref No	Part no.	Description & spec.		Q'ty	Remark
1	JG1064	2.5 內六角扳手	Inside hexagon spanner	1	
2	JG1065	3 內六角扳手	Inside hexagon spanner	1	
3	JG1066	4 內六角扳手	Inside hexagon spanner	1	
4	JG1067	5 內六角扳手	Inside hexagon spanner	1	
5	JG1068	6 內六角扳手	Inside hexagon spanner	1	
6	JG1016	8X10 開口扳手	Open spanner	1	
7	JG1018	12X14 開口扳手	Open spanner	1	
8	JG1019	17X19 開口扳手	Open spanner	1	
9	JG1081	17#套筒 T 型扳手	T type spanner	1	
10	JG4008	水平尺 DP-S93B	Ruler	1	
11	JG6058	螺絲刀(兩用)150mm	Screw driver	1	
12	ZH0082	皮帶清潔粉	The belt cleaner	1	
13	DF0304	RT14-20 保險管 4A	Fuse	2	
14	DF0308	RT14-20 保險管 16A	Fuse	6	
15	ZA1005	說明書	Manual	1	
16	JG6365	風槍	Wind spear	1	900A/LA 1000A/LA 專用
17	QH0106-1	氣管 Φ8*6M	Trachea	1	900A/LA 1000A/LA 專用
18	700AA026	水平調整片 (ZW0122)	Horizontal adjusted patch	4	

